



DME MODULAR IELAND

DME Modular Ireland: Digitising MMC for Next-Gen Construction

FORMALY TEMPO
HOUSING
MODULAR UK
/IRELAND

DEBORAH SMYTH



Thank you for inviting me to the Next-Gen Build event.

DME Modular Ireland specializes in off-site modular construction, delivering efficient, high-quality projects across Ireland.

Today, we'll explore how digitizing MMC enhances efficiency, reduces waste, and accelerates project timelines.

Benefits of Modern Methods of Construction in Housing
Performance Data & Case Studies



Project number: 106167
UKRI funding: £2,038,191

The project partners included Bristol City Council (a leader in modern methods of construction (MMC)-based housing solutions) and nine manufacturers of different MMC systems. BRE coordinated the definition of KPIs and data capture.

Acknowledgements



Innovate
UK



Why Digitised MMC?

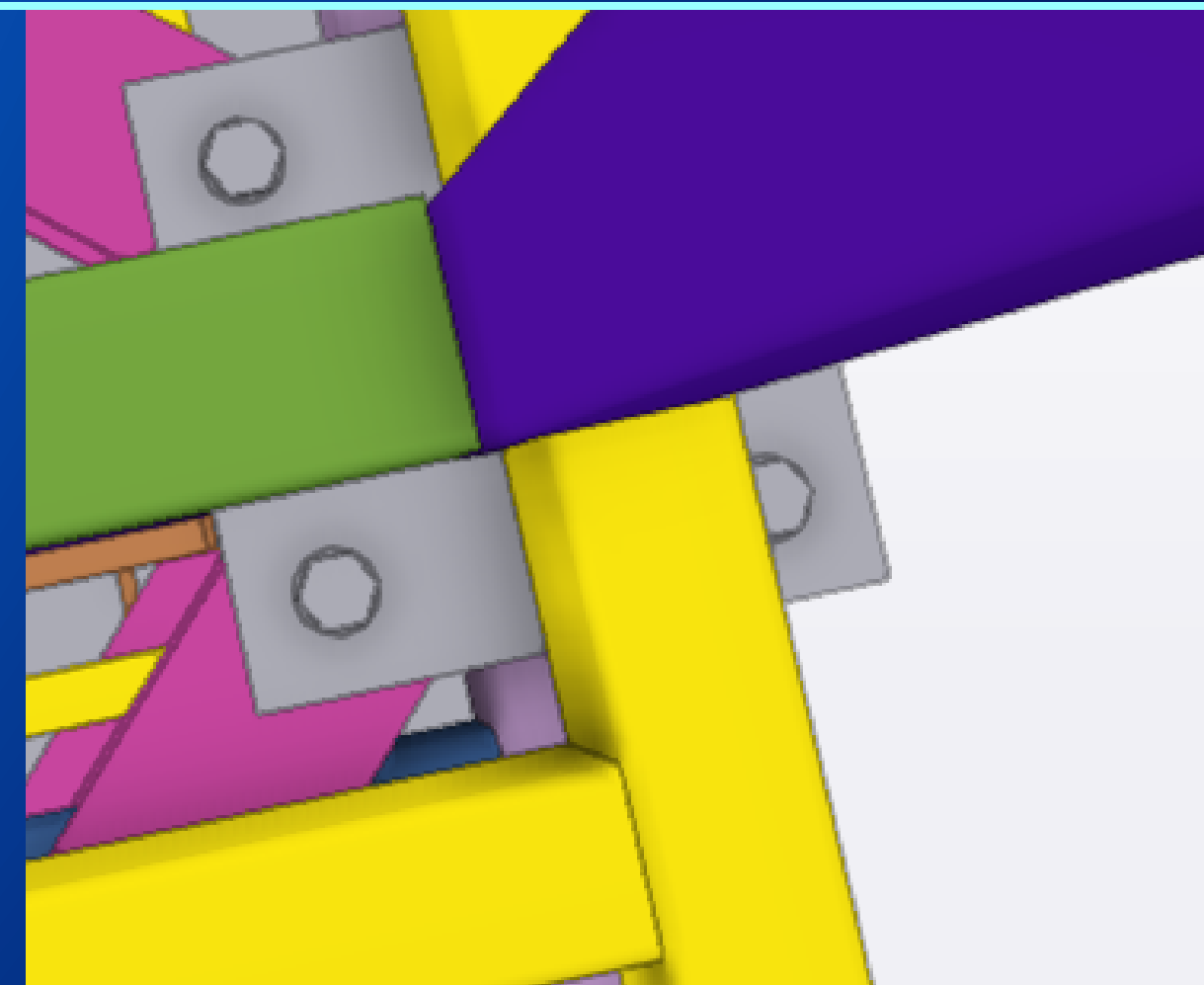
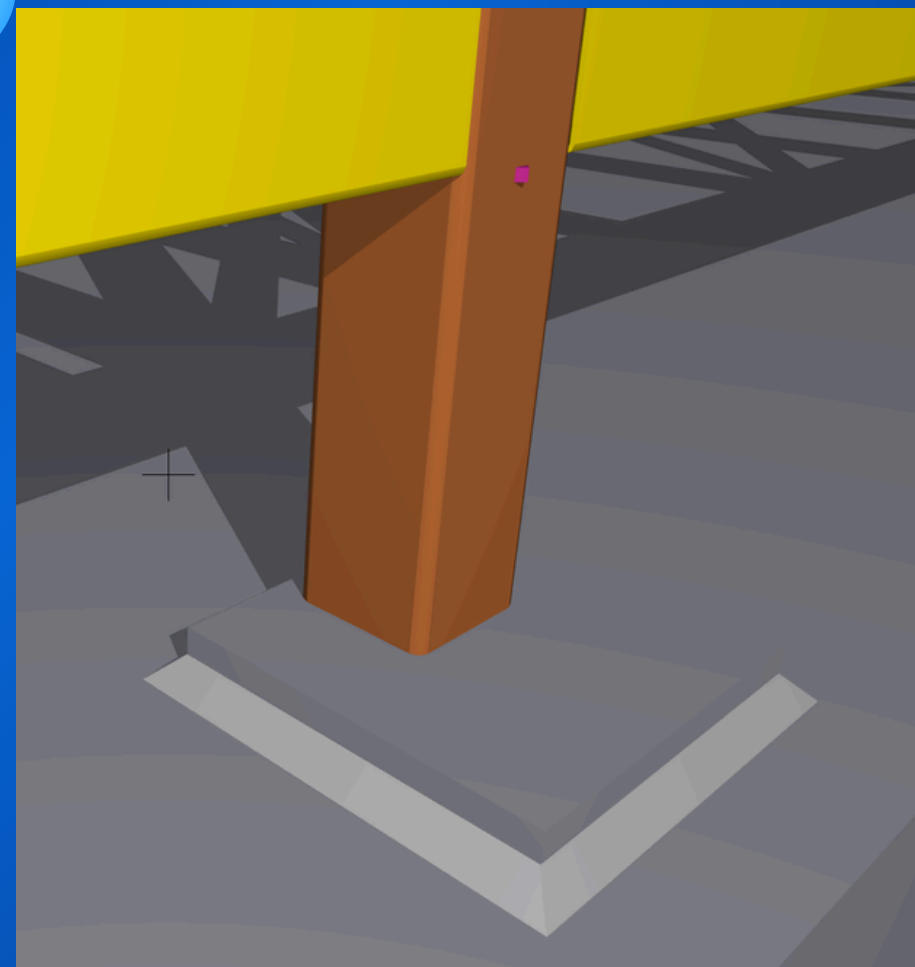
DIGITAL INNOVATION

Over 45% reduction in material use, 50% less waste. Ref: A&L Goodbody

Automate to Elevate: Streamlined workflows via BIM and DfMA. Smarter Blueprints:

Enhanced data analytics capabilities, leading to a 30% growth in customer retention.

AI Empowerment:
Optimizing schedules and quality checks.



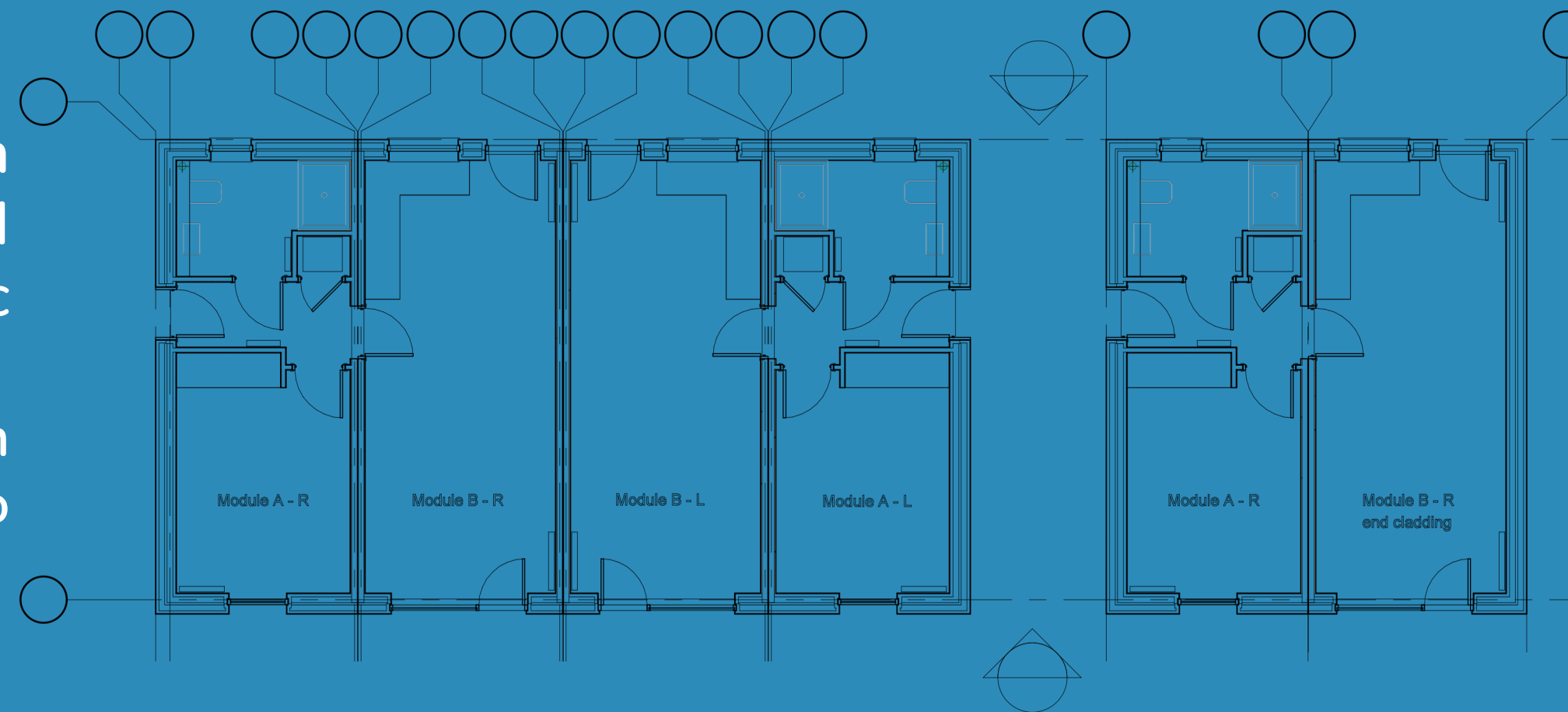
KEY BENEFITS OF STANDARDIZED MODULAR DESIGNS WITH BIM

BLUEBELL NET ZERO PROJECT

STANDARDIZED MODULAR UNIT

Scalability and Flexibility:

- **Adaptable Designs:** Standardized modules can be reconfigured for different projects, with BIM allowing easy adjustments to meet site-specific needs.
- **Data-Driven Decisions:** BIM's data integration supports lifecycle management, from design to maintenance, improving long-term efficiency.



Digitising Modular Construction

Data Analytics: Identifying bottlenecks and improving workflows. Outcome:
Faster delivery, reduced costs, and enhanced delivery



BIM Integration

modeling for
precise design
and
coordination.



DfMA

Optimizing for
manufacturing and
assembly
efficiency.



Project Management Software:

Software: Real-time
tracking of
components and
schedules.



Automation

AI-driven quality
checks and
schedule
optimization.

Modular construction with BIM can decrease material waste by up to 15% (Autodesk, 2020).



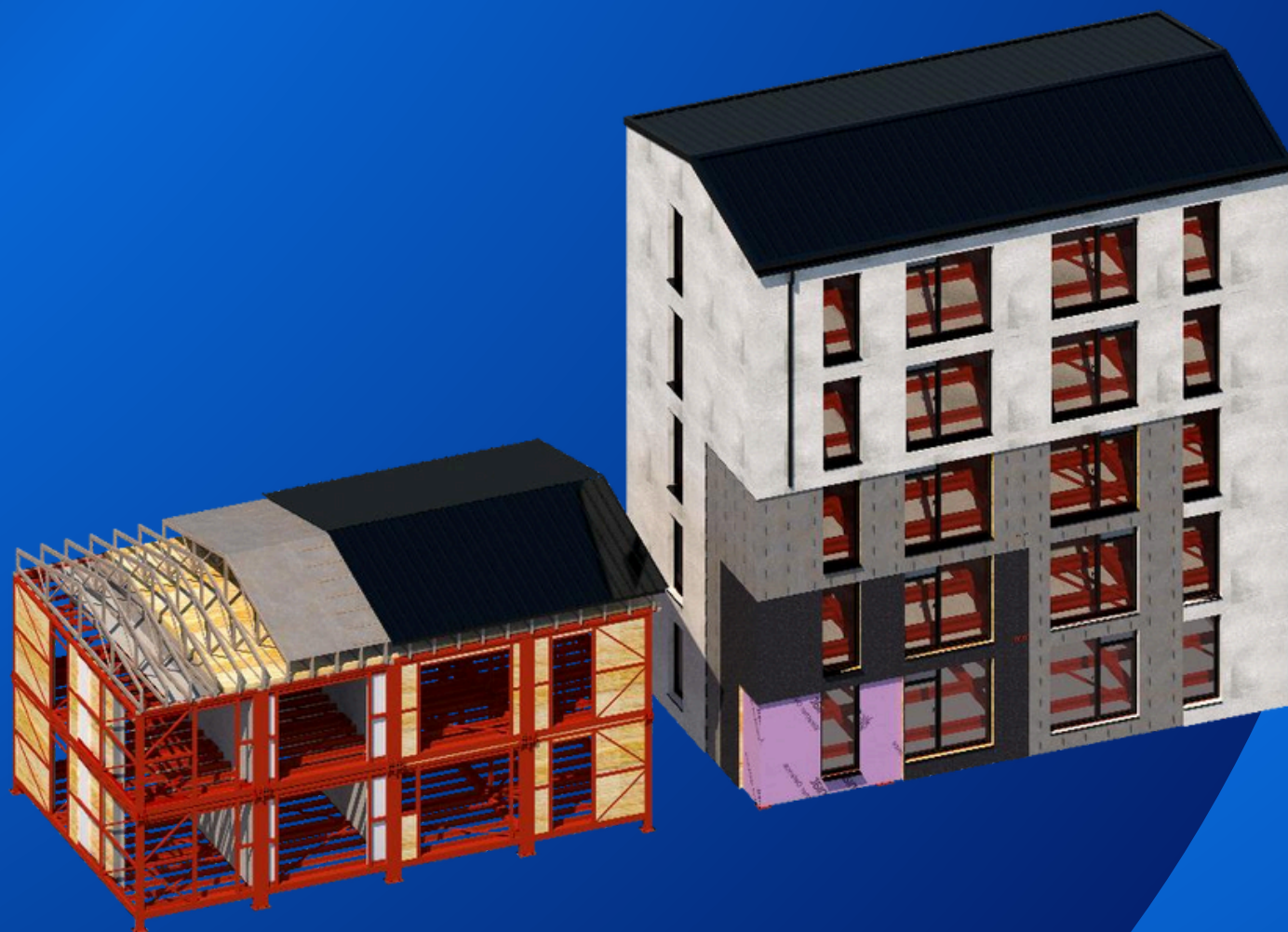
STREAMLINE WORKFLOWS

DEBORAH SMYTH

STREAMLINED WORKFLOWS:
BIM FACILITATES COLLABORATION

AMONG ARCHITECTS, ENGINEERS,
AND CONTRACTORS THROUGH A
SHARED DIGITAL MODEL,

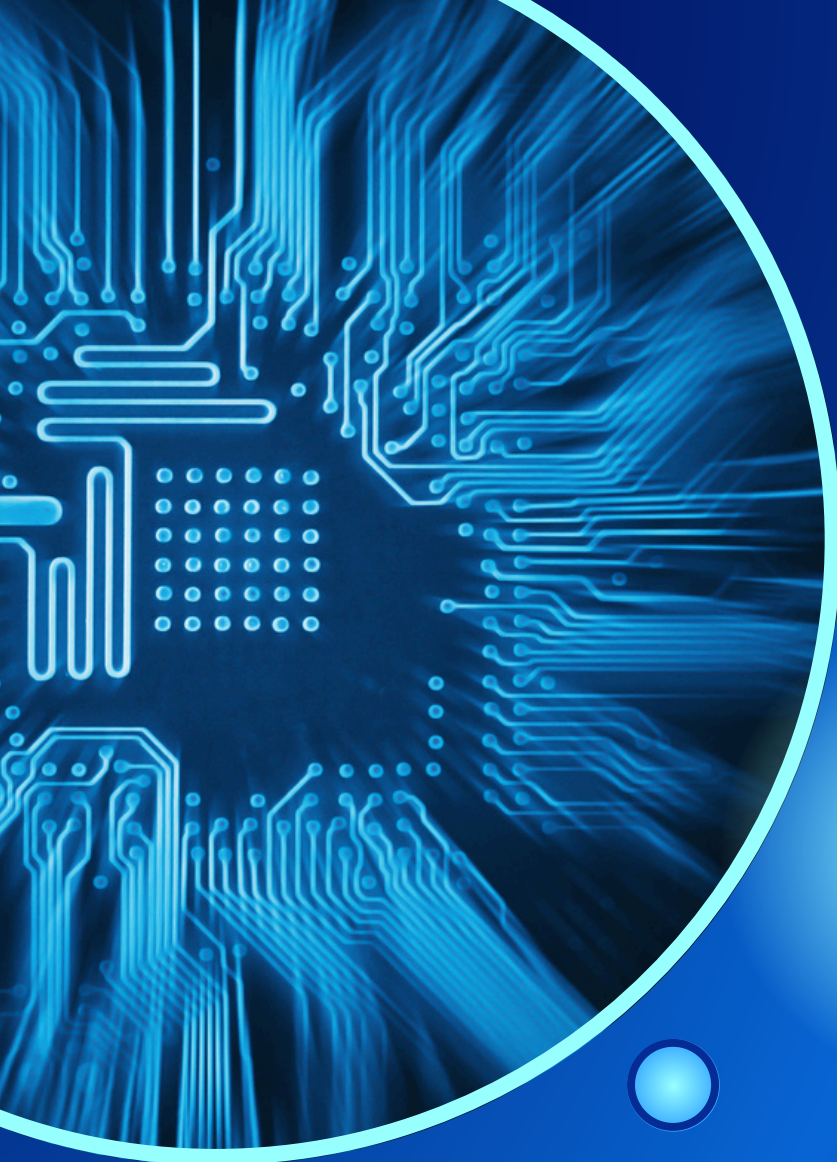
IMPROVING COORDINATION AND
REDUCING MISCOMMUNICATION.



Our Focus:
Design, off-site manufacturing, and installation of sustainable, net-zero homes.

Mission: Transform construction through Modern Methods of Construction (MMC) and digital innovation. **Key Project:** Bluebell, Dublin Irelands first net-zero modular home scheme





TRANSFORMING CONSTRUCTION: DME MODULAR IRELAND'S VISION FOR DIGITISED MMC

KEY MESSAGE:

DME MODULAR IRELAND IS LEADING THE
CHARGE IN MODERNIZING CONSTRUCTION
THROUGH DIGITAL TOOLS, MODULAR
WORKFLOWS, AND SUSTAINABLE PRACTICES.

“SMARTER BLUEPRINTS, GREENER BUILDS.”

Thank you to everyone at CITA
AND GUEST :)

Please feel free to visit our website

www.modularexpressgrouppltd.com

Email ;ds@modularexpressgrouppltd.com