



Leveraging collaboration to drive automation & technology adoption

Caitríona Mordan, Cluster Manager

We unite industry, innovation and Government leaders to tackle shared challenges and unlock opportunities for sustainable growth of the Irish manufacturing sector

Visibility

Collaboration

Innovation

Blue Economy Cluster

BORMAC: Border Region
Manufacturing

Connected Health Industries Cluster

Wood Connect Cluster

IDEAM Manufacturing
Cluster Circular

Bioeconomy
Cluster South-West



Atim Cluster, Athlone.

Connected Health & Wellbeing
Cluster

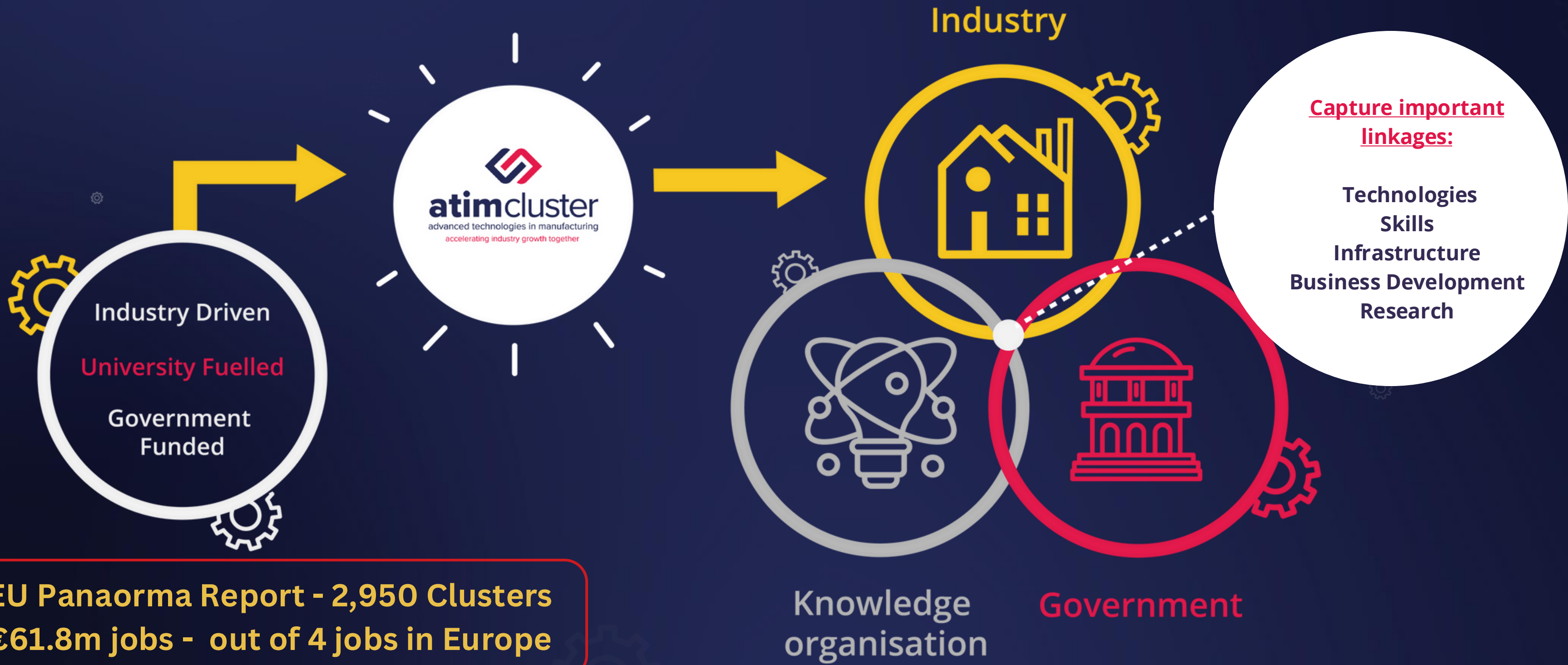
Construction Cluster
Ireland

Engineering South-East

Cyber Security Cluster



Our role



EU Panaorma Report - 2,950 Clusters
€61.8m jobs - out of 4 jobs in Europe

Engineering / Construction



Polymer



Technology



Partners





Build our ecosystem

Foster a sustainable cluster ecosystem through consistent member engagement, networking, knowledge-sharing and collaborative opportunities.

Accelerate Innovation

Provide members with access to knowledge-intensive services and support to adopt digital tools, implement sustainable practices, and foster new innovations, enhancing manufacturing competitiveness.



Develop the workforce

Empower business leaders, and employees (current and future) with the skills and competencies required to deliver transformative change.

Drive business growth internationally

Create new market opportunities for members to attract potential customers, and investors, at national, European, and International level by increasing visibility and developing strategic opportunities for engagement



Our impact

83 Industry Members   **94** Members 

46 COMPANIES SUPPORTED WITH INTERNATIONALISATION ACTIVITIES 

13 LEO Clients 

09 IDA Clients 

Funding 
€1.88m project funding
>€90k ind & other

3550+ engaged through events 

08 Signed European agreements 

59 EI Clients 

03 Udaras 

Collaborative Projects
29 

500+ Connections 

Educational Offerings
06 

Foster networking, knowledge-sharing and collaborative opportunities

Our Approach

- Face to Face & Online Events
- Innovation Circles
- Networking
- Site Visits
- Special Interest Groups :
ESG, Continuous
Improvement & Digitalisation



Our Result

- Community of Practice
- Connecting MNCs with SMEs
- New business & market opportunities
- Building bridges with industry, policy makers and academia
- Localised supply chains



Our Impact

94% members said they are more aware of entities to support their business growth since joining the cluster

+500 Connections
<3500 people attend events

Our Impact continues

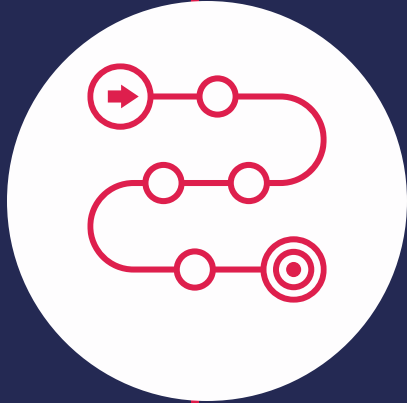
Sustainability Sub Group



Continuous Improvement & Digital



Accelerating innovation



R&D roadmapping

- Matching industry needs with research capability
- Connections with the experts
- Project development
- Grant Writing support



EU & Cascade Funding

- Connection clusters and EU policymakers
- Identify and support members connect with SMEs/clusters
- Apply with EU clusters for funding - focus on energy intensive industries



Access to expertise & support

- CSRD Bootcamp with KPMG, FactoryXChange
- 5 day bootcamp - blended learning approach
- €12,700 per organisation - included as part of membership



€1.88m cluster funded projects



90 companies supported with R,D, & I projects



Anmol Jaguste
Lead Engineer, ATIM



 **anufacture**
cel Empowering Manufacturing
with Technology

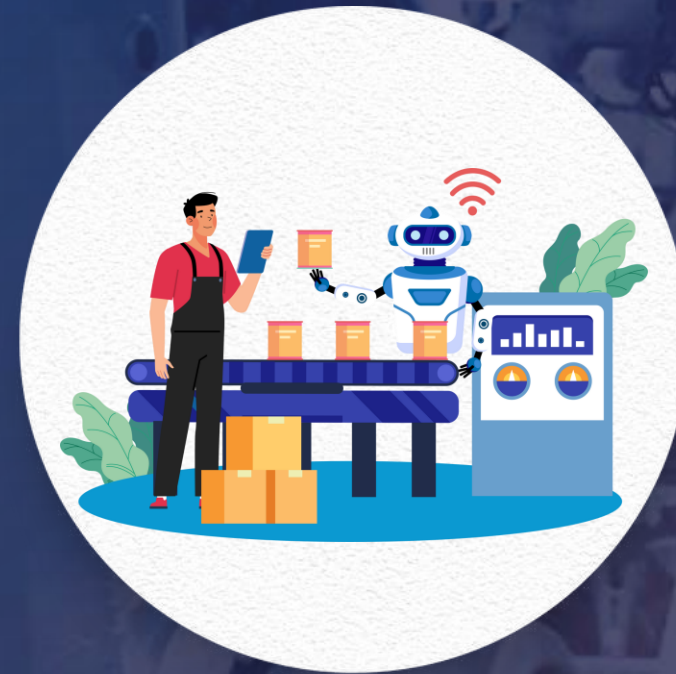
A match-making initiative designed to **connect manufacturing companies with technology companies** to drive technological adoption, innovation and sustainability under 5 key themes



Reducing **Waste** in
Material-intensive
manufacturing process



Optimising **energy consumption** across
manufacturing facilities



Improving **human - robot collaboration** in
manufacturing workflows



Improving **predictive maintenance** in
manufacturing



Ensuring **consistent quality** in high
complexity production

Express your interest as a manufacturing
company or a technology provider !



Workshop & match-making event!

Date: May 21st

Location: Irish Manufacturing Research

Time: 9:30 - 13:30

 **anufacture**
cel Empowering Manufacturing
with Technology





Thank You

Caitríona Mordan,
atim manager