

# AI: The Next Frontier for Irish Construction

# CITA | TECHLIVE

2024 AI in Construction

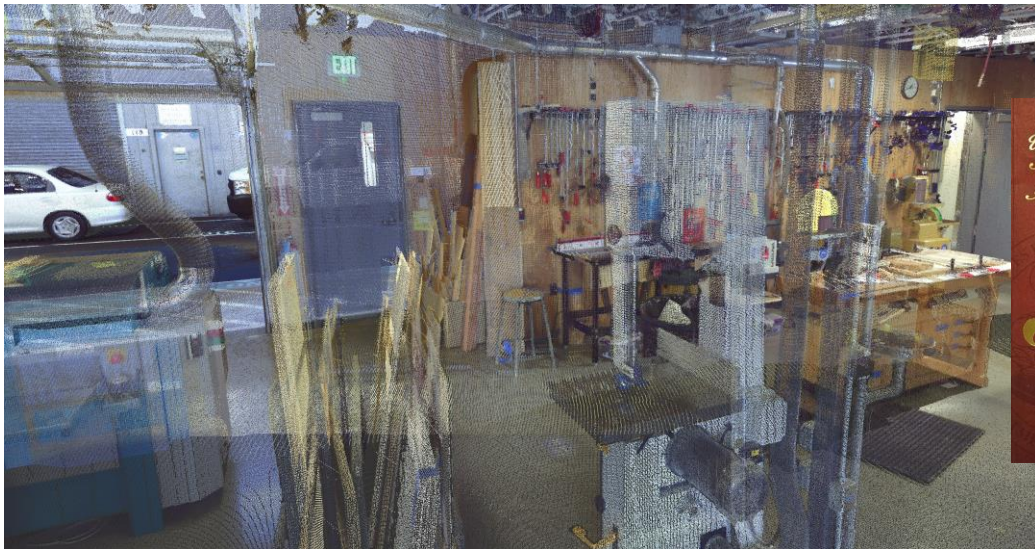


**Cintoo**  
The Visual Twin Platform

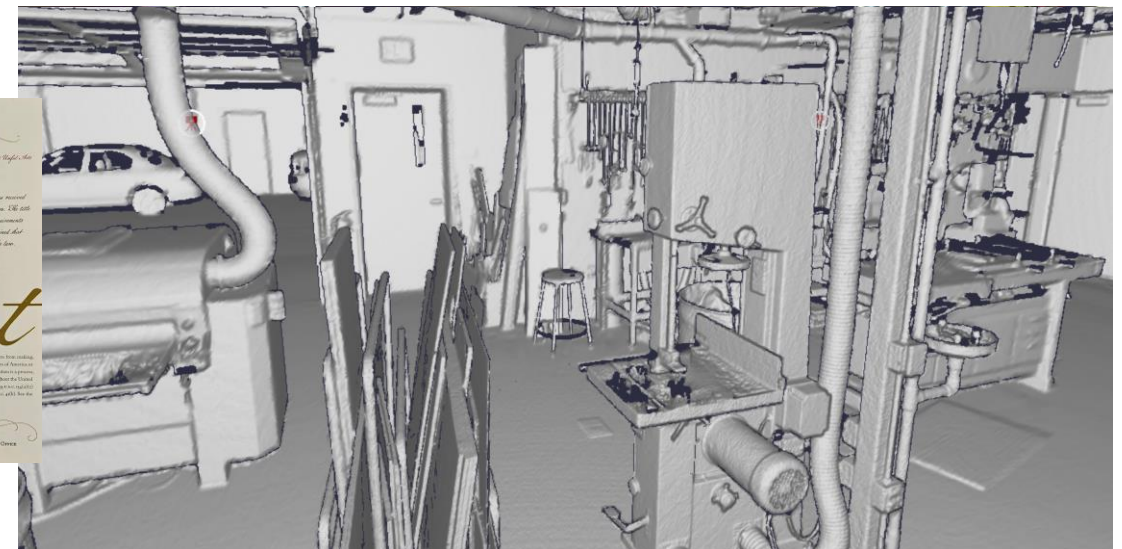
**Geospatial Machine Learning**  
*Accelerate Project Delivery with AI*

**M. Daire KILKELLY**  
Customer Success Manager - Cintoo

## 3D Point Cloud



## 3D Mesh in Web Browser



10 to 20 times smaller

**RICOH**

**Matterport**



**dji**

**emesent**

**FLYABILITY**

**GO SLAM**

**Z+F**  
Zoller-Fröhlich  
**FARO**

**Leica**  
Geosystems

**RIEGL**

**Trimble**

**VIA**metris

**NAVVIS**

**TOPCON**

**360 Camera**

**Matterport**

**Smartphones**

**Drone**

**Drone Lidar Scanners**

**3D Laser Scanner**



**Ricoh  
Theta X**

**Pro 3**

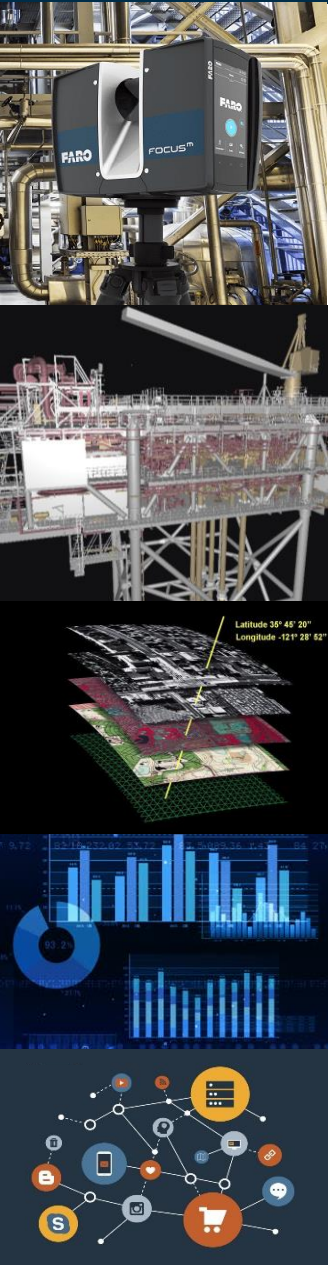
**Generic  
E57**

**Generic  
E57**

**All Drone  
Lidar Scanners**

**All Mobile  
Scanners**

**All Terrestrial  
Scanners**



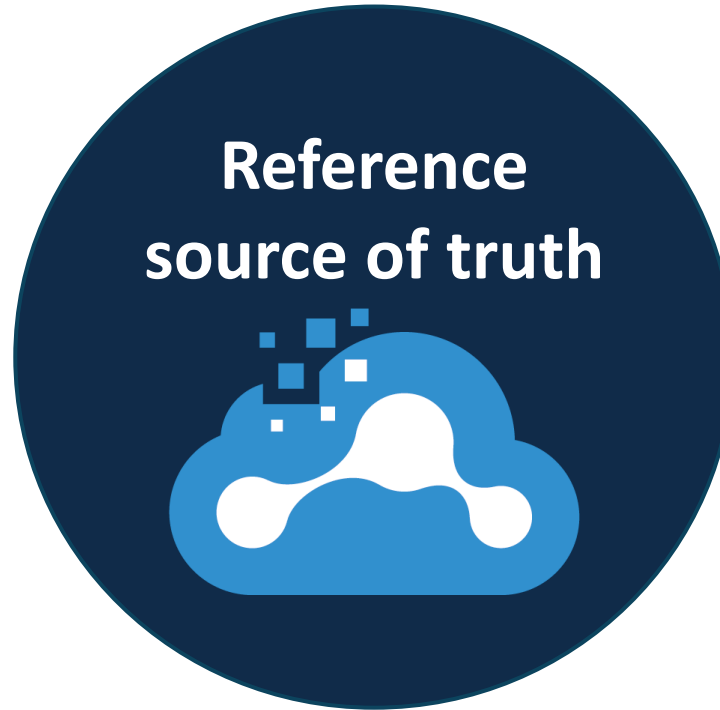
**Reality Capture Data**

**3D BIM / CAD Models & 2D Drawings**

**GIS Layers**

**Heterogeneous Documentation & Business Data**

**Live Sensor Data**



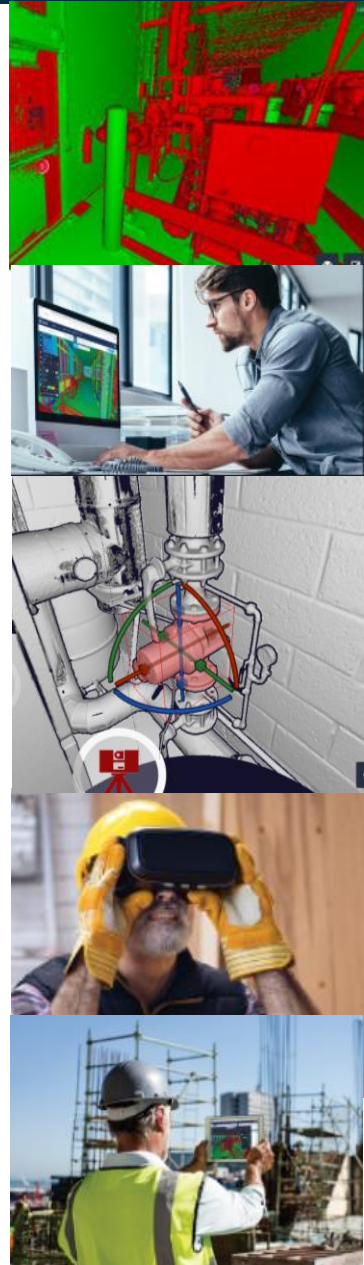
**As-built vs. As-designed & Progress Monitoring**

**Engineering, Retrofits & Scan-to-BIM**

**Asset Management & Predictive Maintenance**

**3D Simulation & Metaverse Experiences**

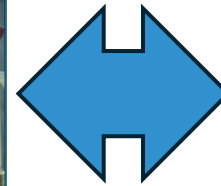
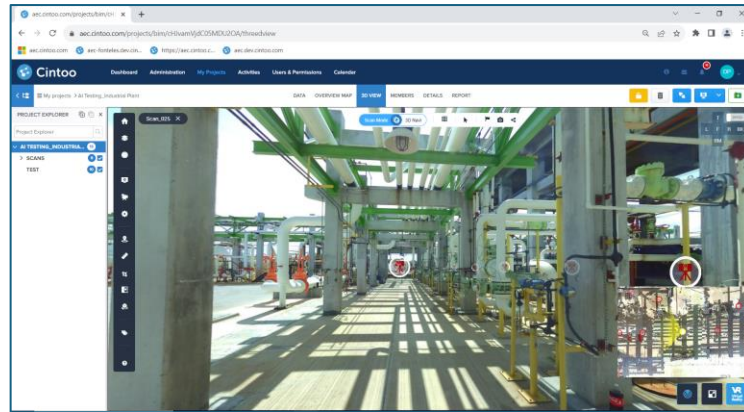
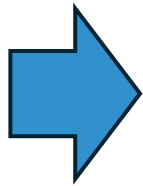
**Remote or In-field Operation**





Cintoo Web & Mobile App.

3D Layout Experience App.



# Cita | TECHLIVE

2024 AI in Construction



Thank you for  
your time



For more information, please scan