



A-EYE Technology

Visualisation Platform for Improving Construction Productivity





THE WALL STREET JOURNAL.

English Edition | Print Edition | Video | Podcasts | Latest Headlines

Home World U.S. Politics Economy Business Tech **Markets** Opinion Life & Arts Real Estate WSJ Magazine

Subscribe Sign in

MARKETS | PROPERTY REPORT

Years Behind Schedule, Berlin's New Airport Stymies Property Development

Brandenburg Airport, initially scheduled to open 10 years ago, never did, and it is unclear when it will welcome its first passenger plane

By [Friedrich Geiger](#)



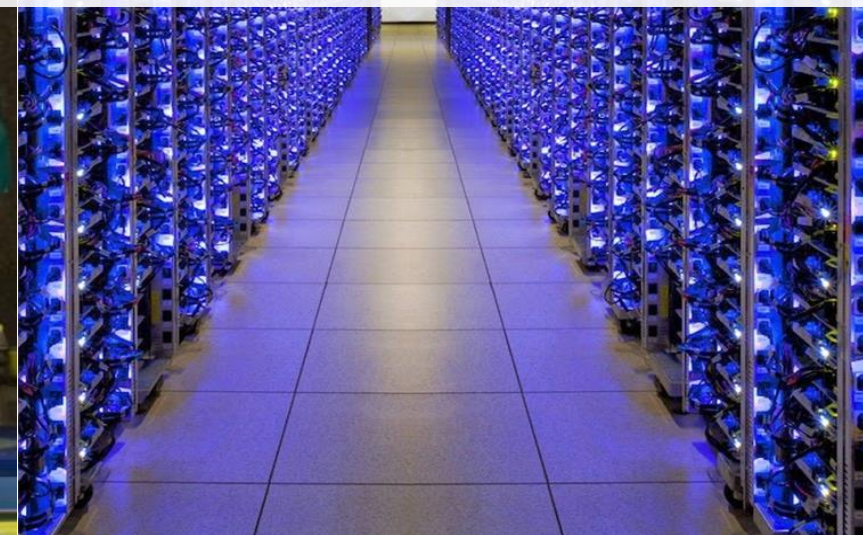
Cost Overruns and Delays

Search International edition

The Guardian

HS2 to be delayed by up to five years as cost spirals to up to £88bn

Parliament told first phase from London to Birmingham could be pushed back to 2031



Unutilised Accumulated Data



PROBLEM

Modest
Construction
Productivity

Industry
Fragmentation

Limited Off-site
Production

Poor Investment
in Technology



The Complexity of Measuring Construction Productivity

SOLUTION

A-Eye platform to
coordinate and monitor
the construction process





People



Project Manager



Quantity Surveyor



Health & Safety



Marketing



Clients



Architects



Planners



M&E



Investors



Developers

COMMUNICATIONS

Solution



VISIBILITY

Project



Progress



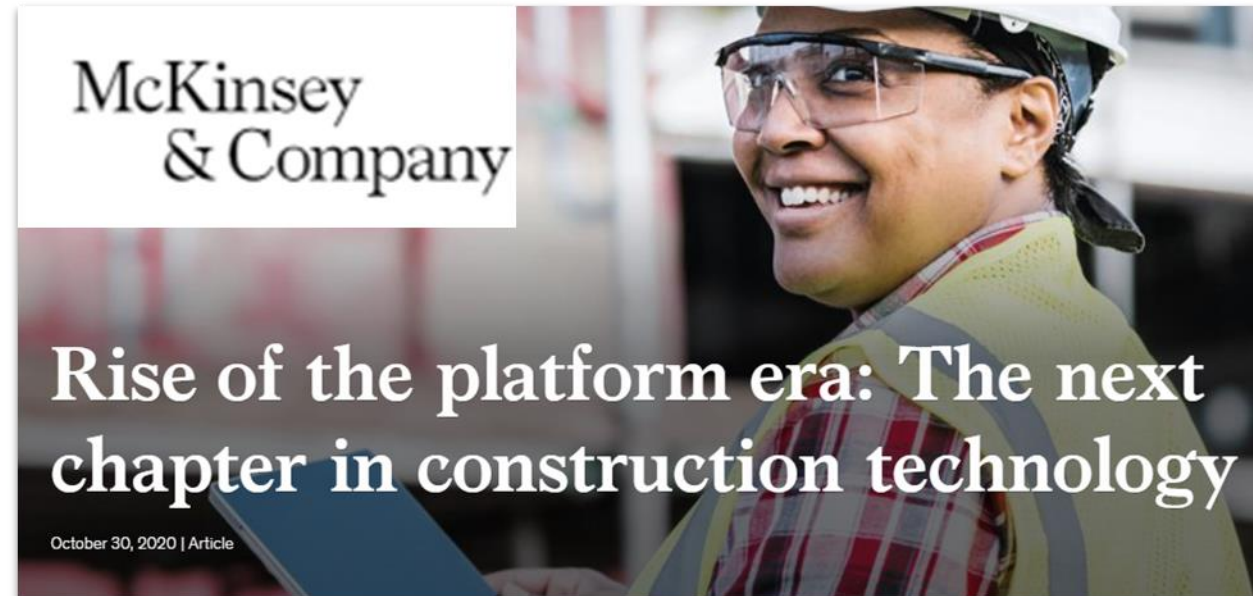
Deliveries



Accidents



People & Equipment

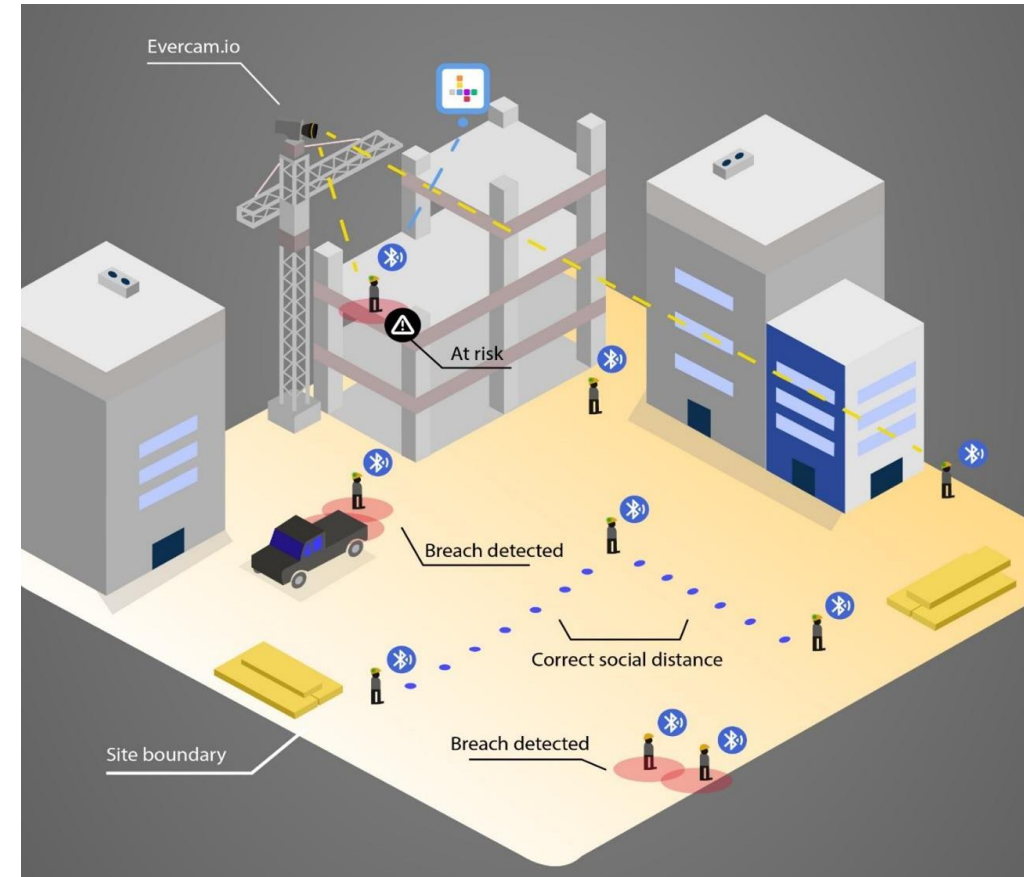


“The construction technology ecosystem is shifting toward integrated software platforms that better serve customer needs. Significant opportunities exist for strategic and financial investors.” – McKinsey & Co. (2020)



A-EYE IN A SNAPSHOT

- Real-time Scheduling and BIM Model Update.
- Matching Billing Process with On-site Progress.
- Real-time Alerts to Prevent Safety Hazards.
- Precise Performance Analytics and Productivity Benchmarking.



A-EYE Control Tower: AI-driven visibility platform to improve productivity on construction sites

CitA | **TECHLIVE**
2022 Challenge, Change, Learn







Project Partners



Construction Visualisation Experts

- Leader in Computer Vision & AI
- 100% y/y growth over 4 years
- 800 projects in 10 Countries
- 100+ employees in 13 Countries



GagaMuller Group Innovate – Disrupt – Integrate

- Project Mgt. & Geospatial Surveying
- Data Analytics & Custom Apps
- 60+ projects in 9 Countries
- 50+ employees in 4 Countries



Technological University Dublin

- Ireland's 1st Technological University.
- 7500+ AEC Students & Researchers.
- Team of reputable researchers
in Construction Innovation.



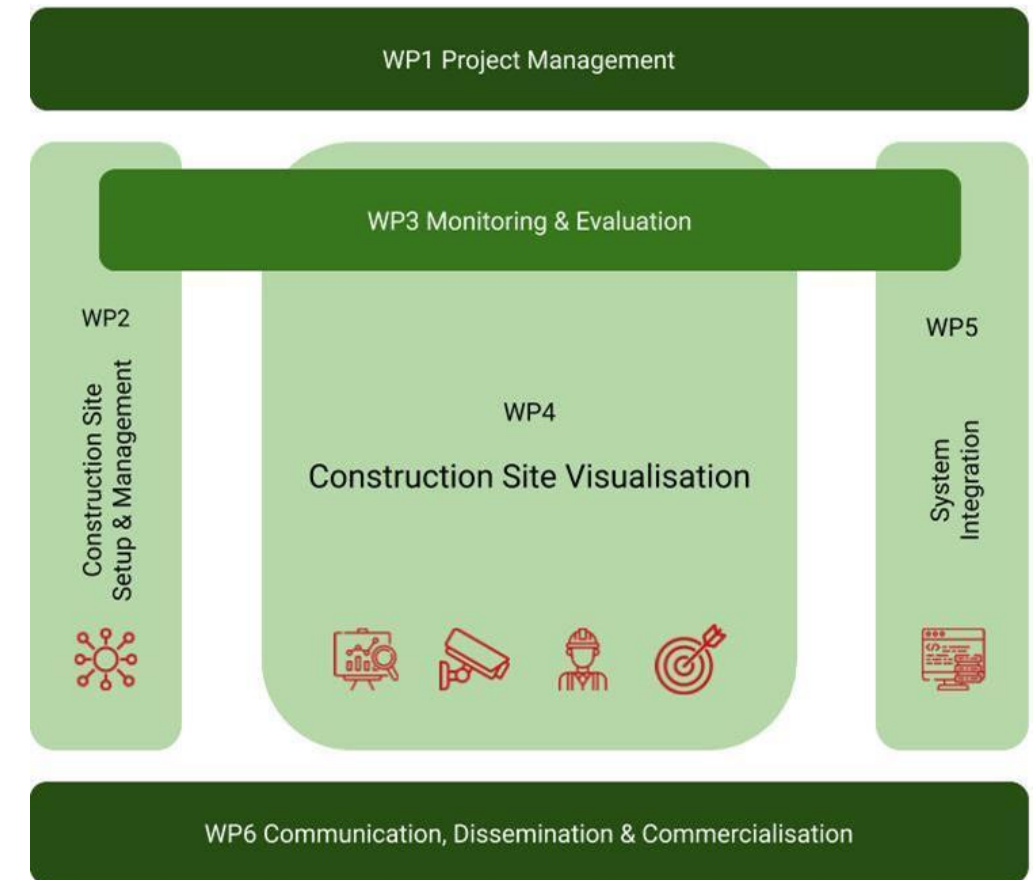
Project Plan

Project Details

- Project Duration: 3 years.
- Commencement date: 1.12.2021
- Budget: €3.78 million
- Enterprise Ireland (DTIF) Contribution: €2.09 million

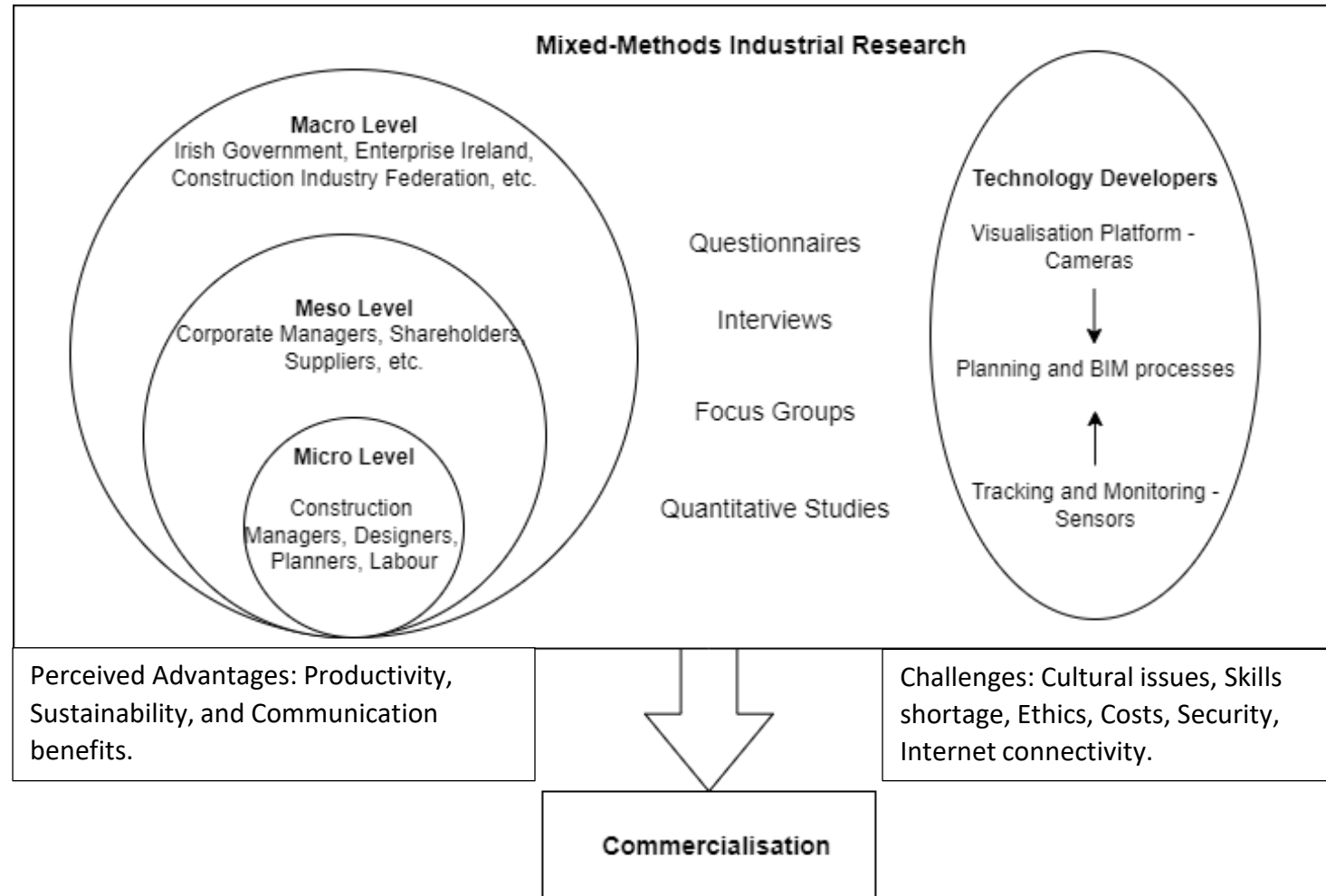
Practical Approach

Piloting on live construction site(s).






Industrial Research Framework





Follow A-EYE & Connect with Ahmed on LinkedIn



A-EYE Technology
Disruptive Construction Technology Project - Funded by DTIF, Enterprise Ireland
Construction · Dublin · 939 followers

Alan & 4 other connections work here · 6 employees

✓ Following More

Home My Company About **Posts** Jobs People Videos

www.linkedin.com/company/a-eye-construction-technology/mycompany/



Ahmed Hassan (Dr)
Postdoctoral Research Fellow at Technological University Dublin
Talks about #aeyetechnology, #ictconstruction, and #constructionproductivity
Dublin, County Dublin, Ireland · [Contact info](#)

 A-EYE Technology

www.linkedin.com/in/ahmed-hassan-2b92a0166/



Thank You