

CitA | **TECHLIVE**
2020

Working with Covid19



Monday 21st September

The CitA Virtual Summit: **Changing the way we work**



The Future of Places

Construction Industry Challenges and Opportunities Post- COVID-19





VINCI is a specialist civil engineering, construction and facilities management company.

VINCI takes a collaborative, partnership approach to projects, building professional relationships based on mutual respect and trust. We operate a culture of teamwork, openness and support, in which everyone is encouraged to strive for excellence. Social value and sustainability are at the heart of everything we do, and our health and safety record is second to none. We are also able to draw on the expertise of other VINCI companies and subsidiaries around the world.



EXCELLENCE



COLLABORATION



INNOVATION



INTEGRITY



DISCIPLINE



Corporate



Defence



Petrochem



Government



Healthcare



Rail



Industrial



Local Authority



Retail



Utilities



Education



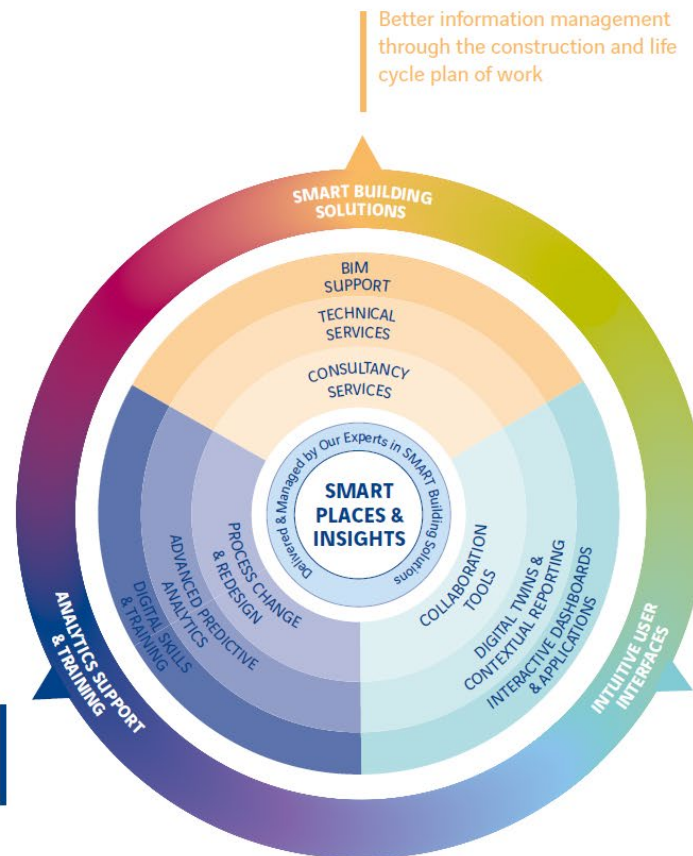
Social Housing

Impacted Workplaces



*“To be regarded by all our stakeholders as
the leading and trusted expert
in the responsible management, operation
and **adaptation of**
the built environment”*

VINCI Facilities “VISION”



SMART PLACES & INSIGHTS



ANALYTICS SUPPORT & TRAINING

SMART BUILDING SOLUTIONS

INTUITIVE USER INTERFACES

HOME

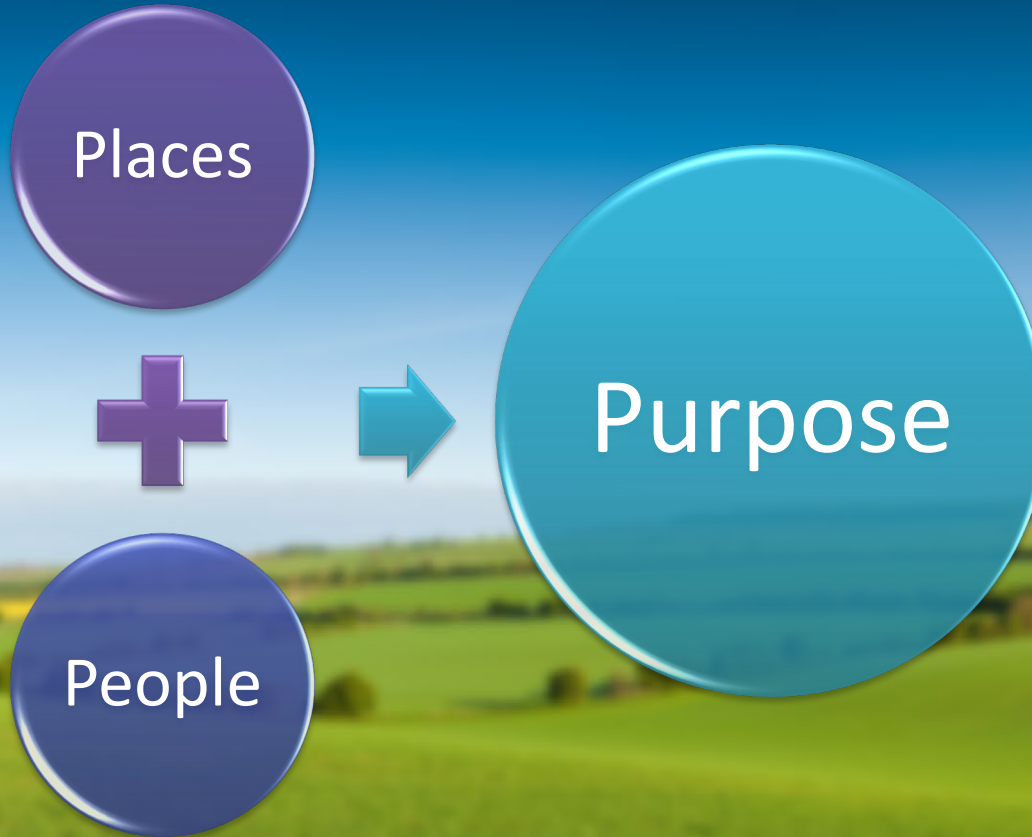




There will be time, there will be time
To prepare a face to meet the faces
that you meet.

— *T. S. Eliot* —

Year 2020 and Beyond



Identity Crisis for “Places”



Focus Area

Workplaces & Connected Offices



Production Office



Cubicle Office



Open Plan Office



Capture the built environment



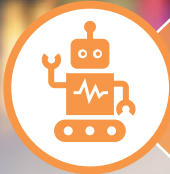
Interact with the built environment



Analyze the built environment



Connect with the built environment

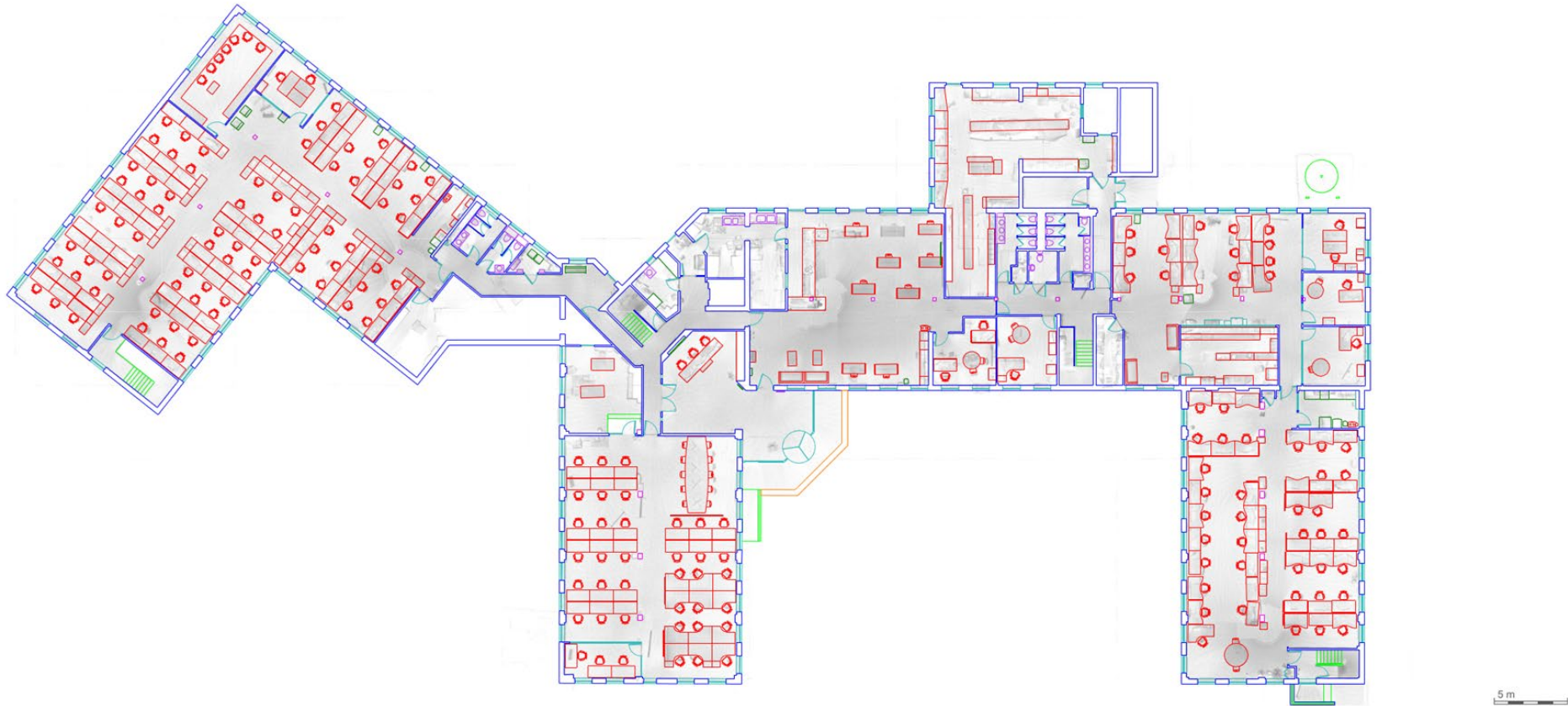


Automate the built environment



Like a torch for visualising three-dimensional reality, the BLK2GO automatically builds 3D point clouds while in motion. From the moment you begin a scan session until the moment you turn off the BLK2GO, all imagery and 3D data are combined.









Sensor network

OCCUPANCY

-  PRESENCE/OCCUPANCY
-  TRAFFIC FLOW
-  DOOR COUNTER
-  PARKING

POSITIONING

-  POSITIONING





USER SATISFACTION

-  FEEDBACK POLLING

ENERGY METERING

-  ELECTRICITY
-  GAS
-  WATER
-  WASTE

WELL-BEING

-  TEMPERATURE
-  CO₂
-  HUMIDITY
-  NOISE





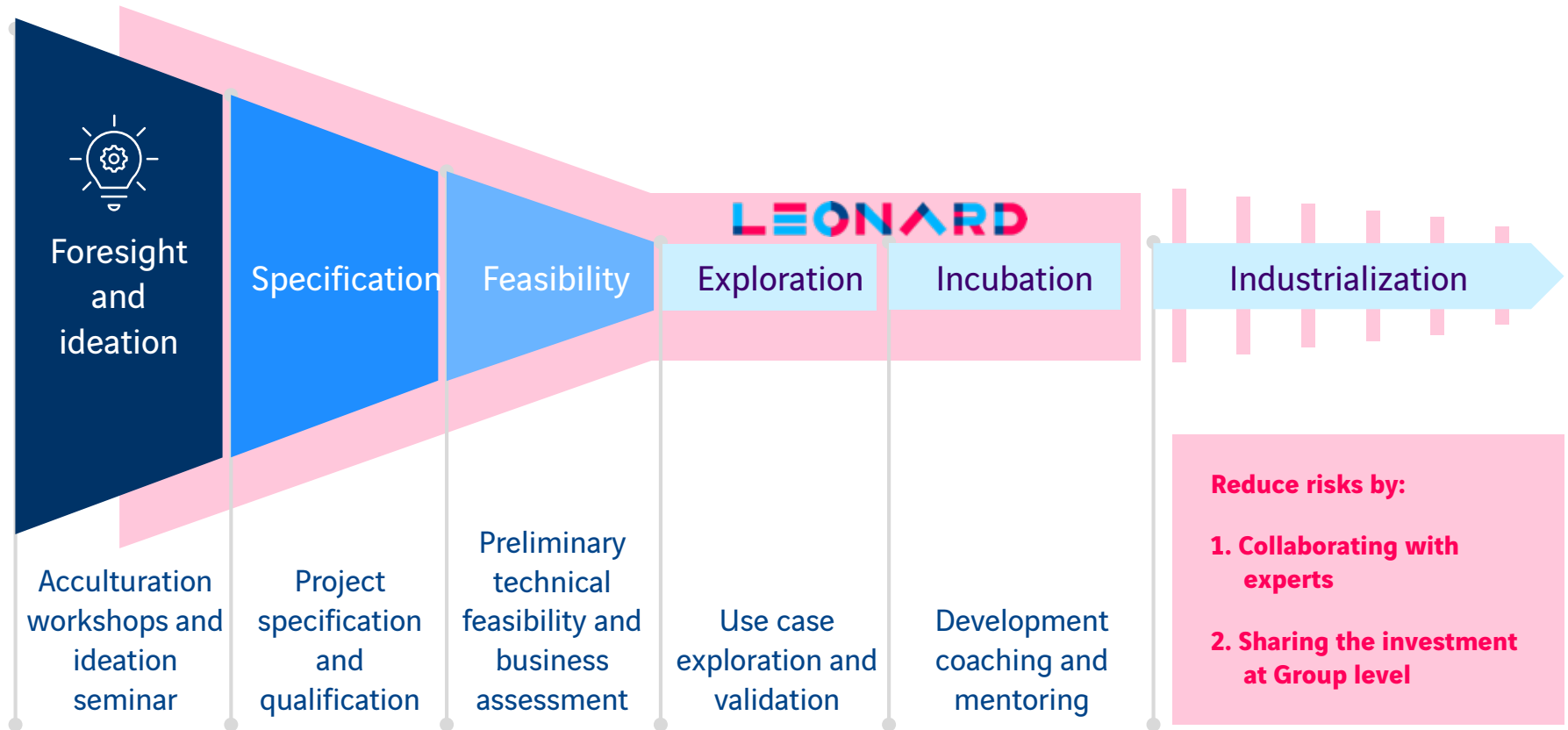
LEONARD

Let's innovate together to build the cities and regions of the future.

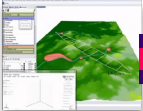





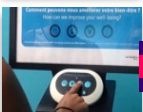



together @ VINCI 

Within a transforming world, Leonard detects new trends, supports innovation and brings together all the players involved in shaping the future of cities and regions.

<https://leonard.vinci.com/>





PROJECT	BENEFITS	FINANCIAL IMPACT
 Synapse	Reduction of a project delivery cost	300 000€ turnover in 2020  New BU
 Chronsite	Automatic collection of information enabling a more effective performance monitoring ; Enhance building site productivity	300 000€ estimated benefit for a 10 M€ building site
 Monument Historique	Improvement of the operations ; semi-automatic reporting ; automatus AutoCAD plan generation	180 000€/y estimated savings  New BU
 Lisea-Meseta	100 day expert/year saved ; improvement of the infrastructure life cycle ; digitization of the processes ;	23,8 M€ maintenance savings 100 k€/y savings in licences & software
 Customer Satisfaction	Better performance monitoring ; Cleaning crew plan optimisation ; Customized alert system	100 000€ profit loss to recover
 Infrastructure management	Enhance knowledge of the infrastructure degradation process ; Accurate short-to-medium term prediction and robust long-term ones	1 000 000€/year targeted market for 2021
 SprinkIA	+50% in contract signed; 50 000h/year FTE savings ; Standardisation of the pipe production processes	3 200 000€/year savings  New BU



VINCI Construction



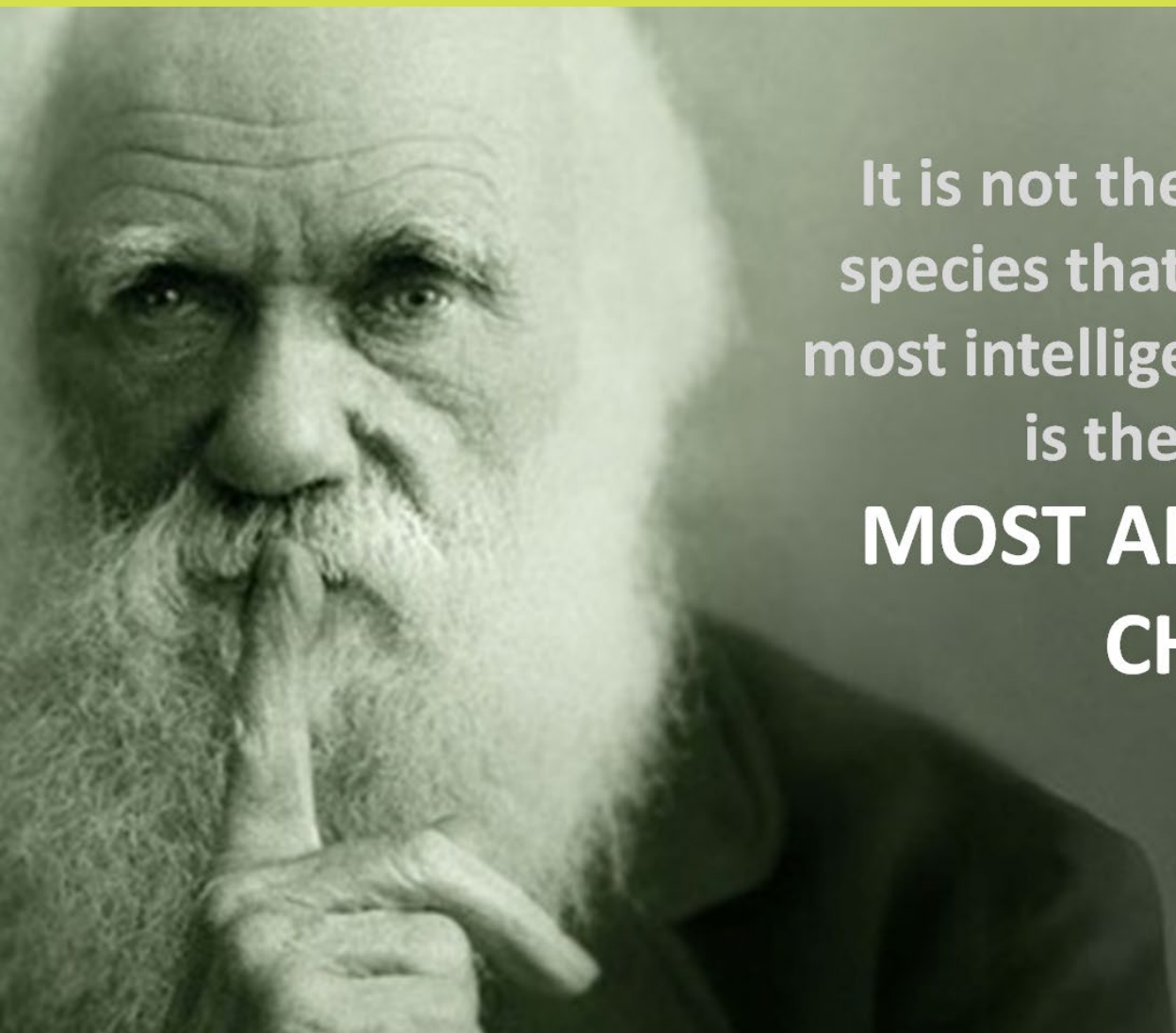
VINCI Concessions



VINCI Highways



VINCI Energies



It is not the strongest of the
species that survives, nor the
most intelligent that survives. It
is the one that is
**MOST ADAPTABLE TO
CHANGE**

CITA | **TECHLIVE**
2020

Working with Covid19



Thank you