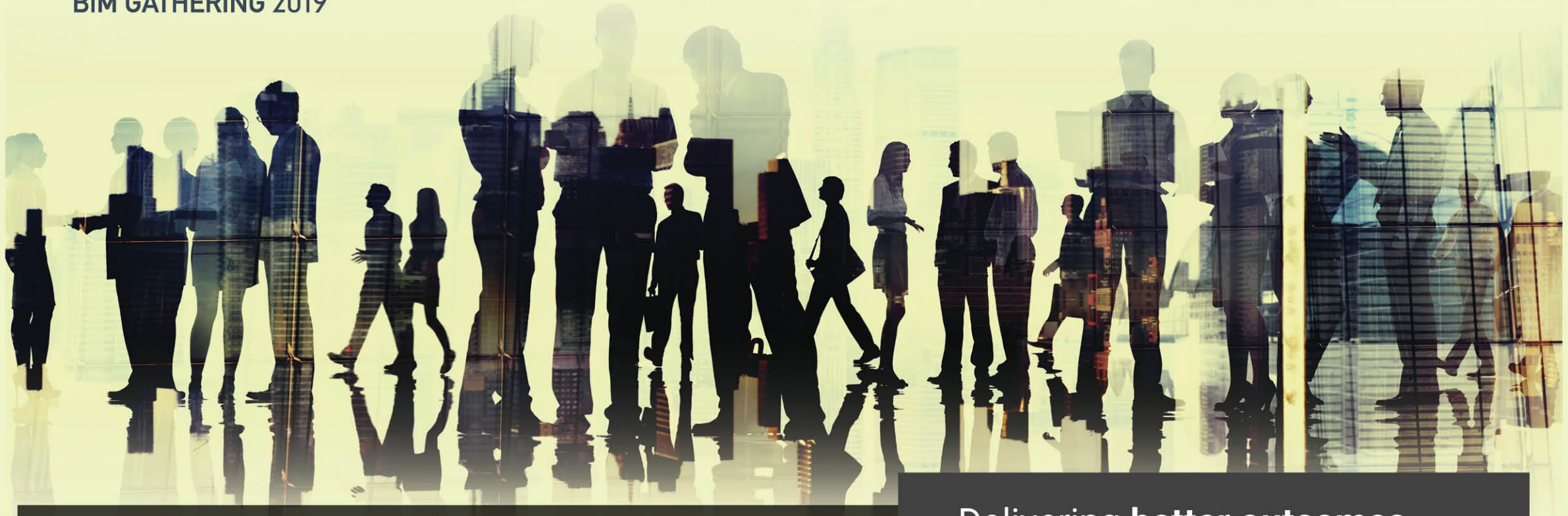


# CitA

BIM GATHERING 2019



**4th CitA BIM Gathering** 26th September 2019, Galway, Ireland.

Delivering **better outcomes**  
for Irish Construction



## Why model checking is no longer a luxury

CitA BIM Gathering 2019  
Harry O'Neill, Solibri

**SOLIBRI**  
A NEMETSCHEK COMPANY

---

Delivering **better outcomes**  
for Irish Construction

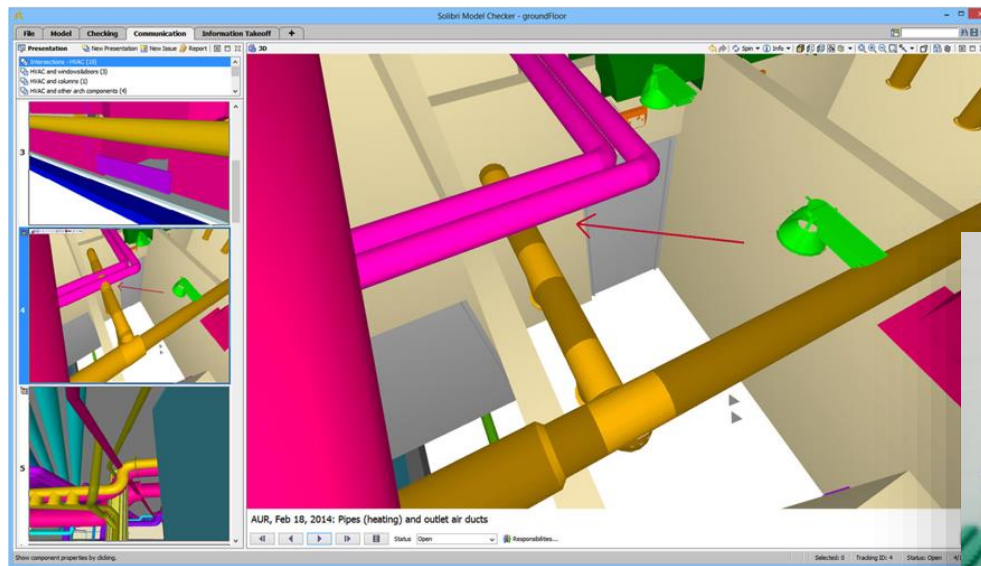


# Why choose this topic?



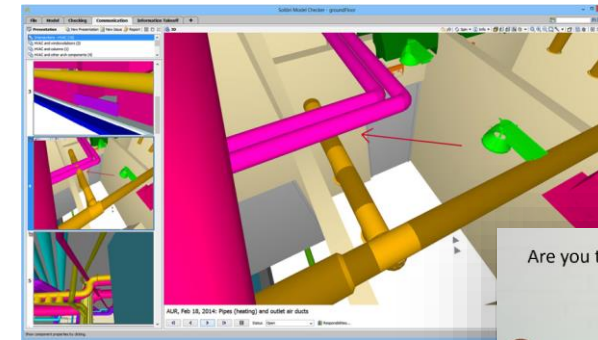


Is it enough to only do clash detection? Can we do more?





Is it enough to only do clash detection? Can we do more?



What does **“more”** look like?  
How do we define it?

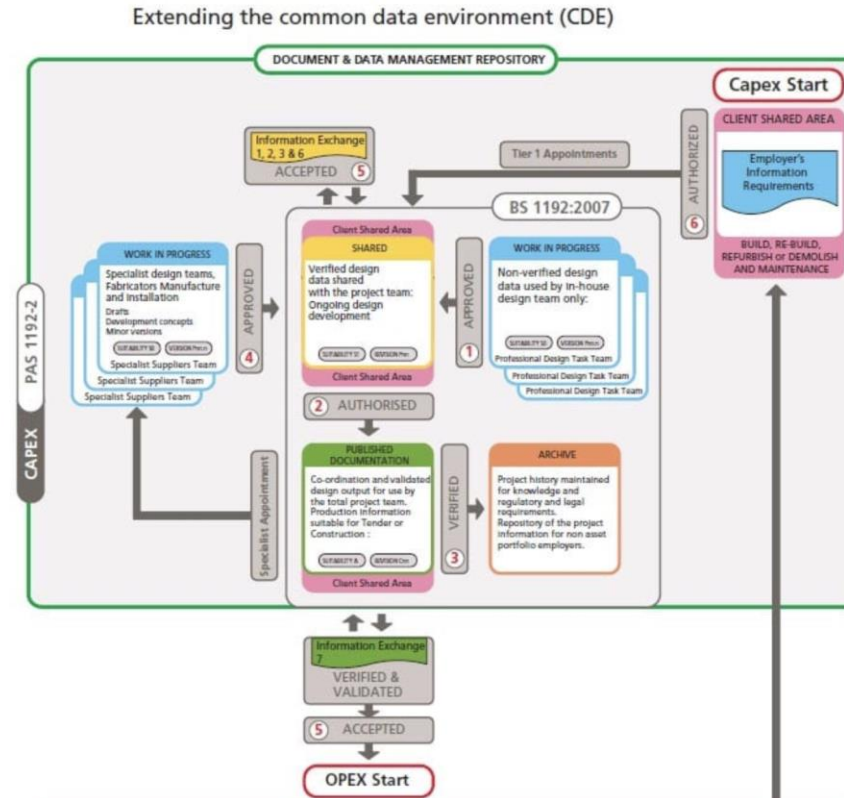


# What does “**more**” look like? How do we define it?



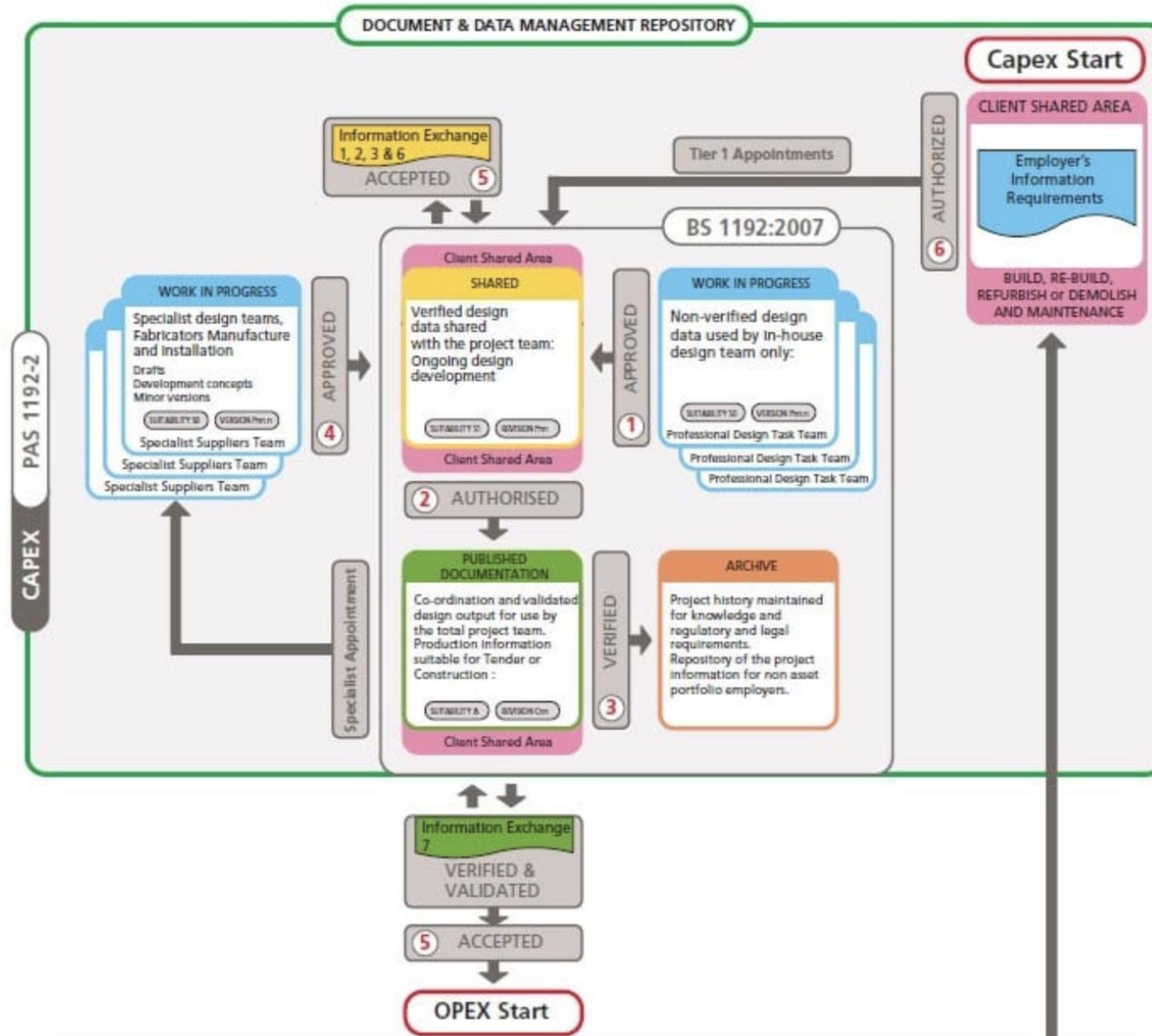


## Rewind to 2016





## Extending the common data environment (CDE)

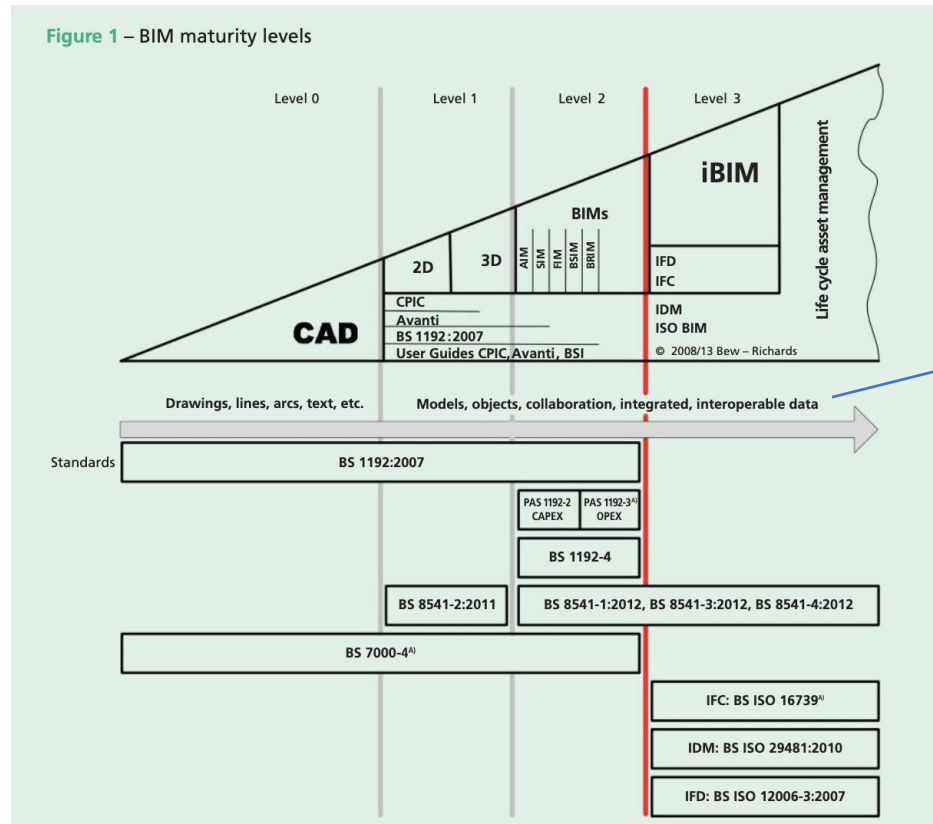




## Why model checking is no longer a luxury



Figure 1 – BIM maturity levels



Collaboration  
Interoperable Data  
Models

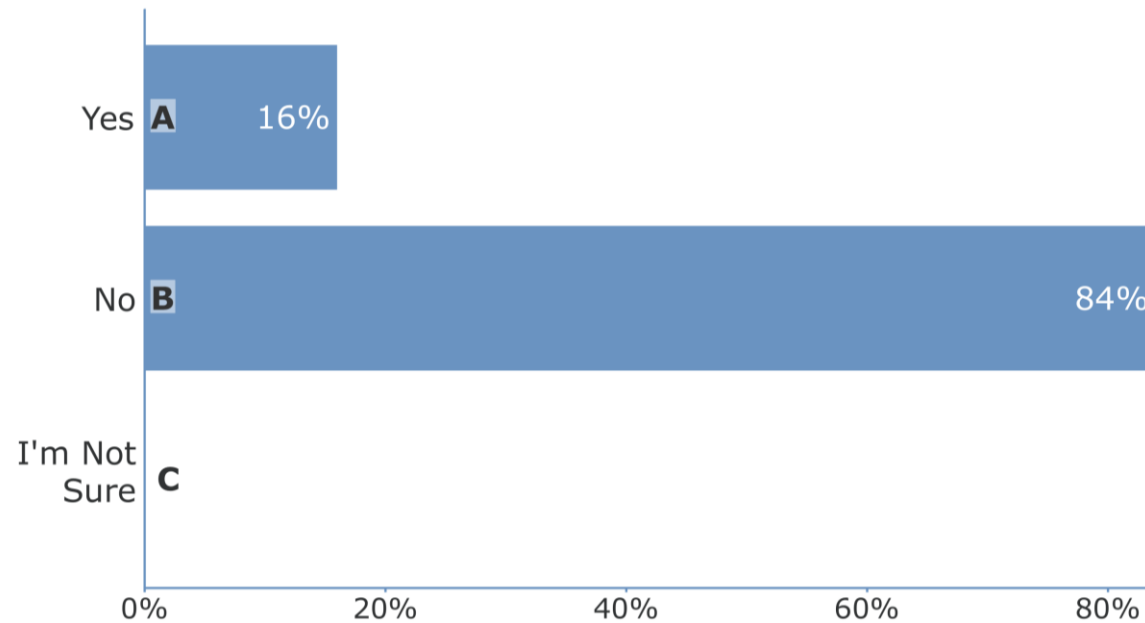


What is Quality Assurance to you?





## Do you have a quality assurance / data validation process?





# Poll





”Is it enough...?” – Our Research Outcome: **No**

## How do we **validate** our models and ensure complete **quality**?

Talk about ‘model checking’ and ‘quality assurance’ as a standard way of working, not a luxury.



## How do we **validate** our models and ensure complete **quality**?

Talk about 'model checking' and 'quality assurance' as a standard way of working, not a luxury.

Why is this important?

- **Reduced risk**
- **Ensures higher quality from earlier in the project workflow**
- **Early project completion**
- **Save time & money**
- **Build better relationships with clients & across the chain**
- **Project compliance**
- **Ahead of (or up to speed with!) competition**



## Our Customers and their use cases...

### Solibri plays the lead role in our BIM workflow

"Simultaneously, BIM as the perfect instrument for us to improve quality, lead time and total costs of a project. And Solibri plays the lead in this all."

November 13, 2018 | Stories



Albert Gils, BIM manager at De RuwBouw Group (DRBG), is responsible for BIM workflow implementation in his organization. The RuwBouw Group of structural solutions from prefab walls and floors, sand-lime products to c

### New Nordic Functionalism and a good night's sleep

For more than three decades, Copenhagen-based Danielsen has used BIM to create their New Nordic Functionalism, which places Danielsen among the pioneers in the Nordic region. In recent years, their employment of Solibri throughout the workflow has secured their project managers a good night's sleep

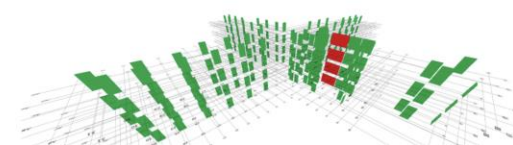
December 7, 2018 | Stories



### BIM for the UK Ministry of Justice – Quality assured!

Bond Bryan Digital took part in the UK estate transformation for the Ministry of Justice to work collaboratively with two contractors, providing quality assurance in the project between Dec 2017 and Aug 2018. The role was to carry out checking not for the geometry, but instead, for the data in all the discipline models, and also to create project-specific rulesets to support the information managers. The successful outcome included nearly 20 000 Solibri rules and 16 federated models with very, very few errors.

Hanna Backman | July 5, 2019 | Projects

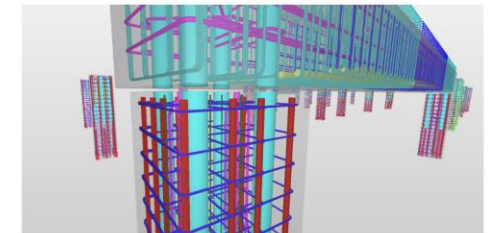


### Finding issues early –

### World class prefabrication requires world class quality assurance

Checking the quality of digital information is an essential part of any project at Laing O'Rourke. It begins with initial clash checks, design iteration checks and model revisions, continues by checking the precast concrete products manufactured at Laing O'Rourke's offsite manufacturing facility, Explore Industrial Park (EIP), and concludes with further checks carried out at the project site itself.

Hanna Backman | April 16, 2019 | Projects





“You can’t use information until you’ve checked that information.”

“Simultaneously, BIM as the perfect instrument for us to improve quality, lead time and total costs of a project. And Solibri plays the lead in this all.”

“People think of geometry as being important on the site, of course it is, but so is the data.”

*“People often talk about coordination as if it was only clash detection, but quality assurance is so much more.”*

“Model checking just gives us that complete reassurance that when the project is actually put together on site, everything works exactly as it should.”





# Open the Debate



Thank you