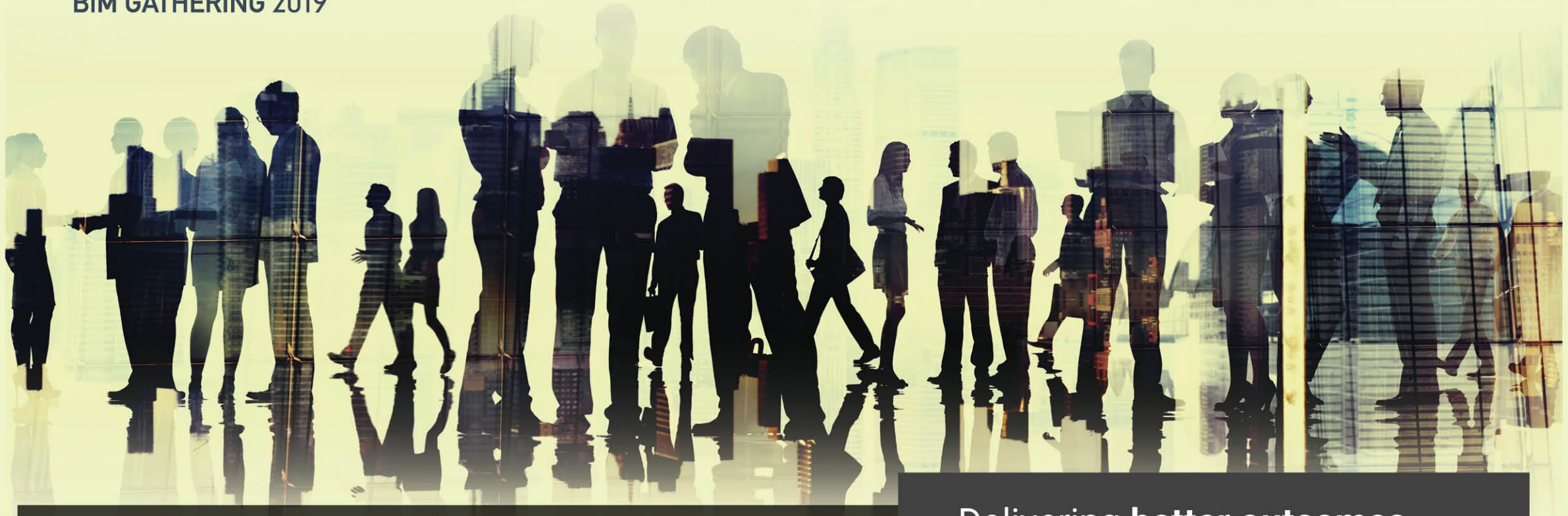


# CitA

BIM GATHERING 2019



**4th CitA BIM Gathering** 26th September 2019, Galway, Ireland.

Delivering **better outcomes**  
for Irish Construction



## Seán Harrington Architects

Luka Stefanovic – Architecture Industry Specialist Vectorworks UK & Ireland

### ***Tallaght Project – moving to BIM workflows***



SEÁN  
HARRINGTON  
ARCHITECTS







- Established over 15 years ago

## Guiding Principles

- To design sustainably
  - To make 'better places'
  - To celebrate craftsmanship
- 
- Distinct contemporary language based on sound environmental principles and a deep understanding of technical matters. Expertise lies mainly in housing and bridges



# Whitestown Way, Tallaght, Co. Dublin

## Project Overview



- The project is a development of 81 Apartments for older residents



Above/ Right: View of an external courtyard



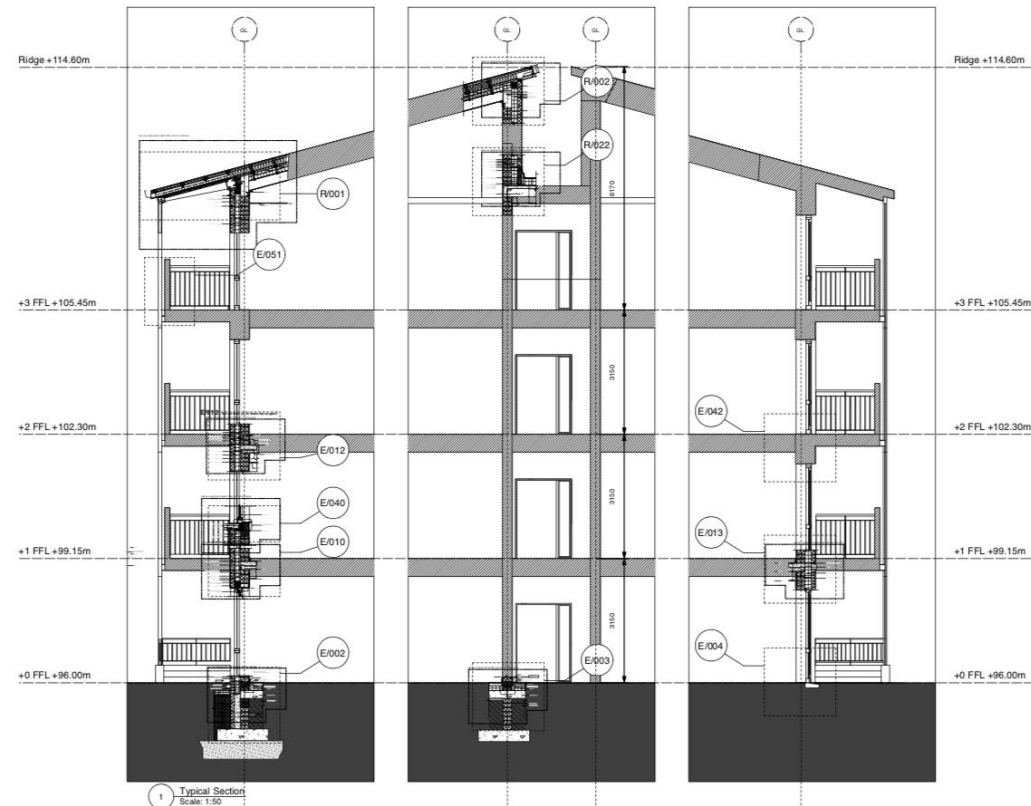


# Whitestown Way, Tallaght, Co. Dublin

## Project Overview



- Sheltered housing development with support facilities, on the southern edge of Tallaght

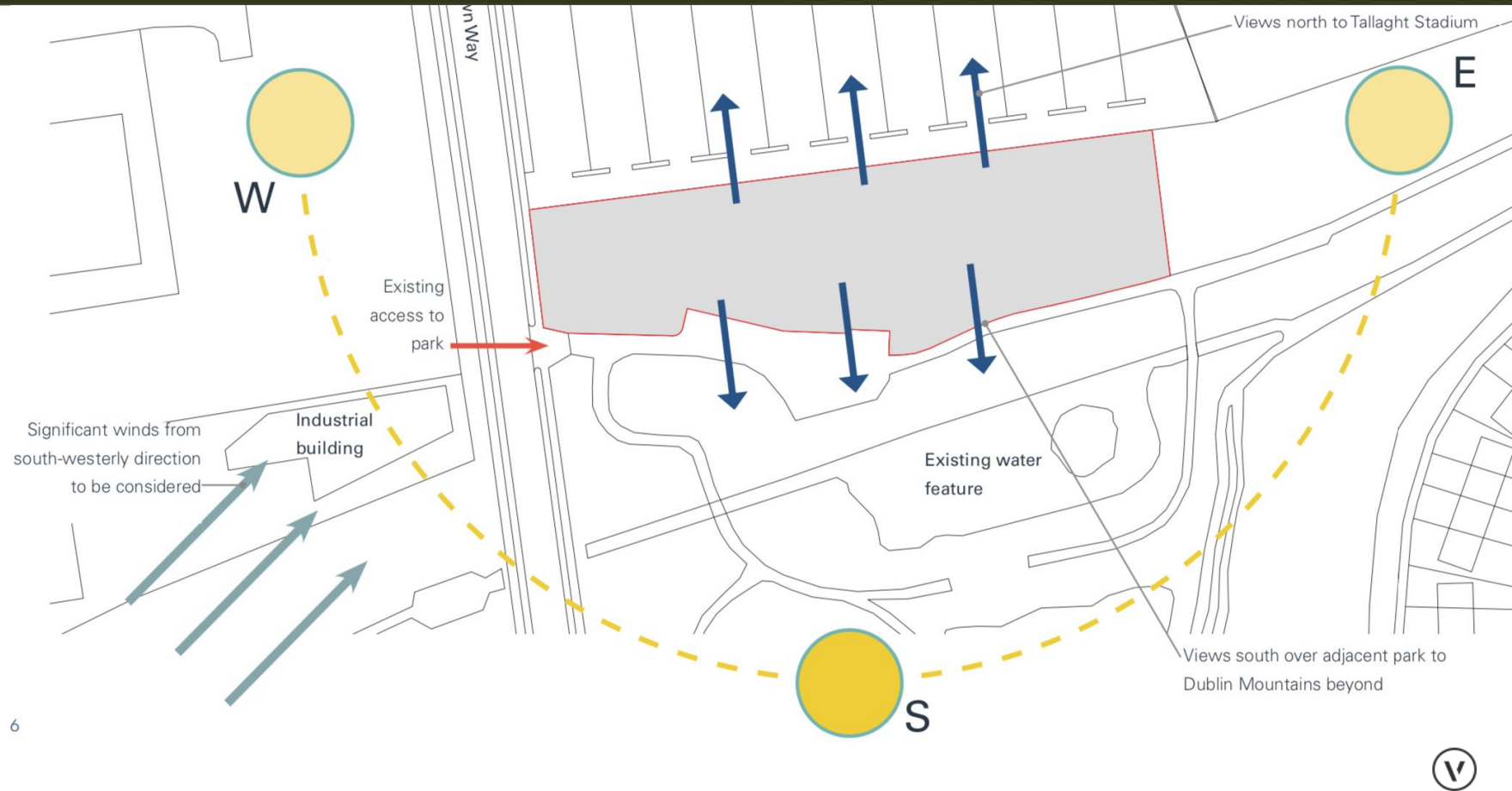


# Whitestown Way, Tallaght, Co. Dublin

## Site Information



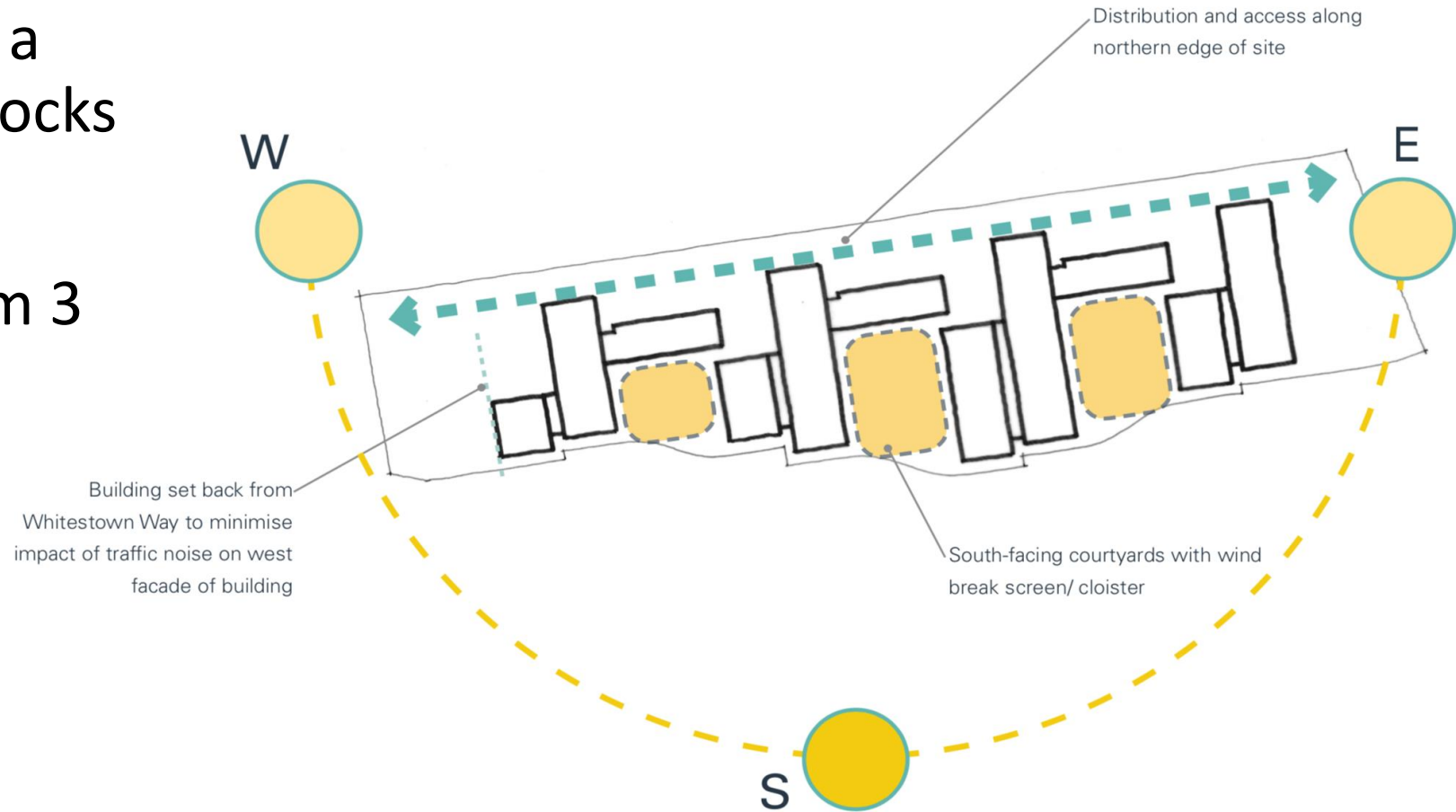
- The proposed site is long and shallow, with shallow depth in N/S direction
- Need to maximise views to the south for all residents
- Ensure no apartments were exclusively north facing







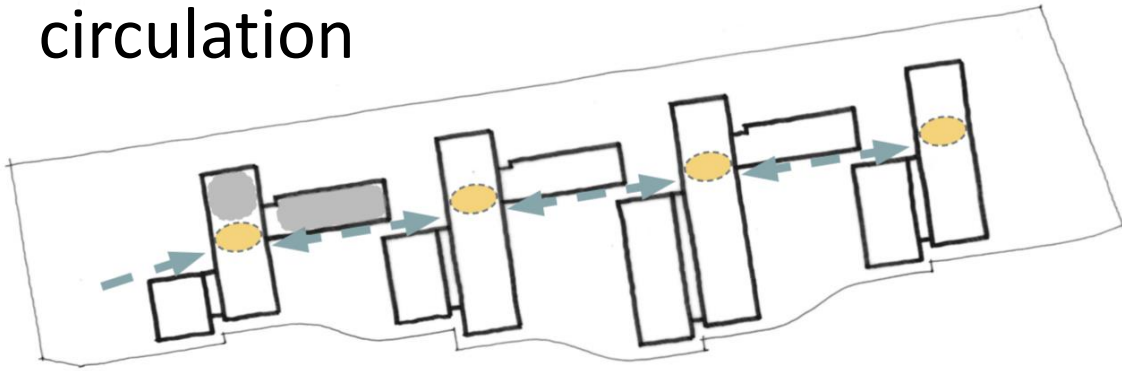
- Development arranged as a series of 4 North/South blocks
- Blocks range in height from 3 to 4 stories
- Blocks are similar, but not exactly the same, posing potential problems in workflow management



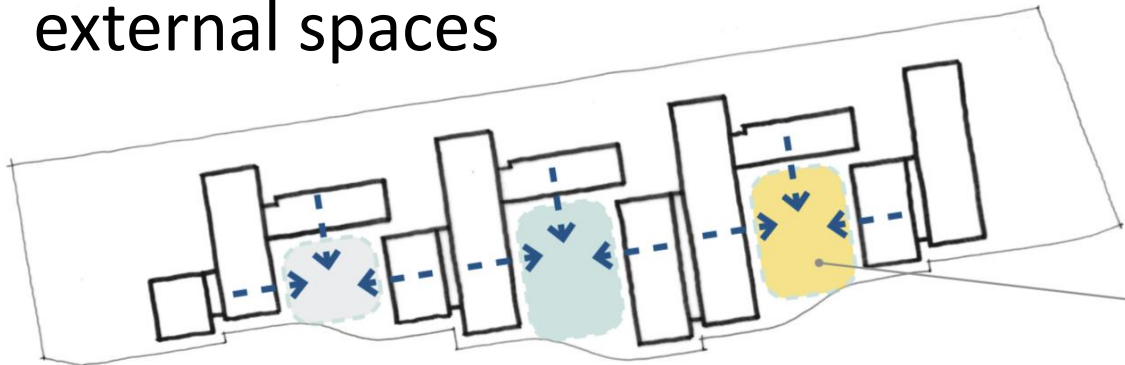




circulation



external spaces



Site Plan





- View from south







- View from north



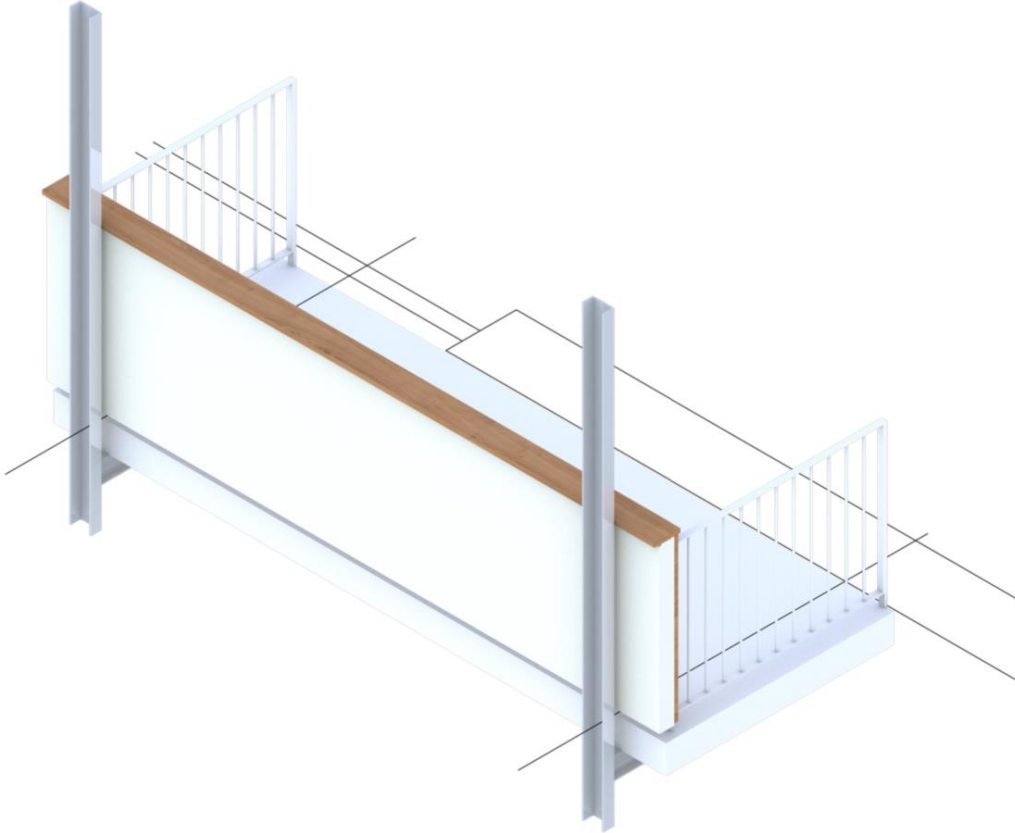
*Aerial view from north - current scheme*





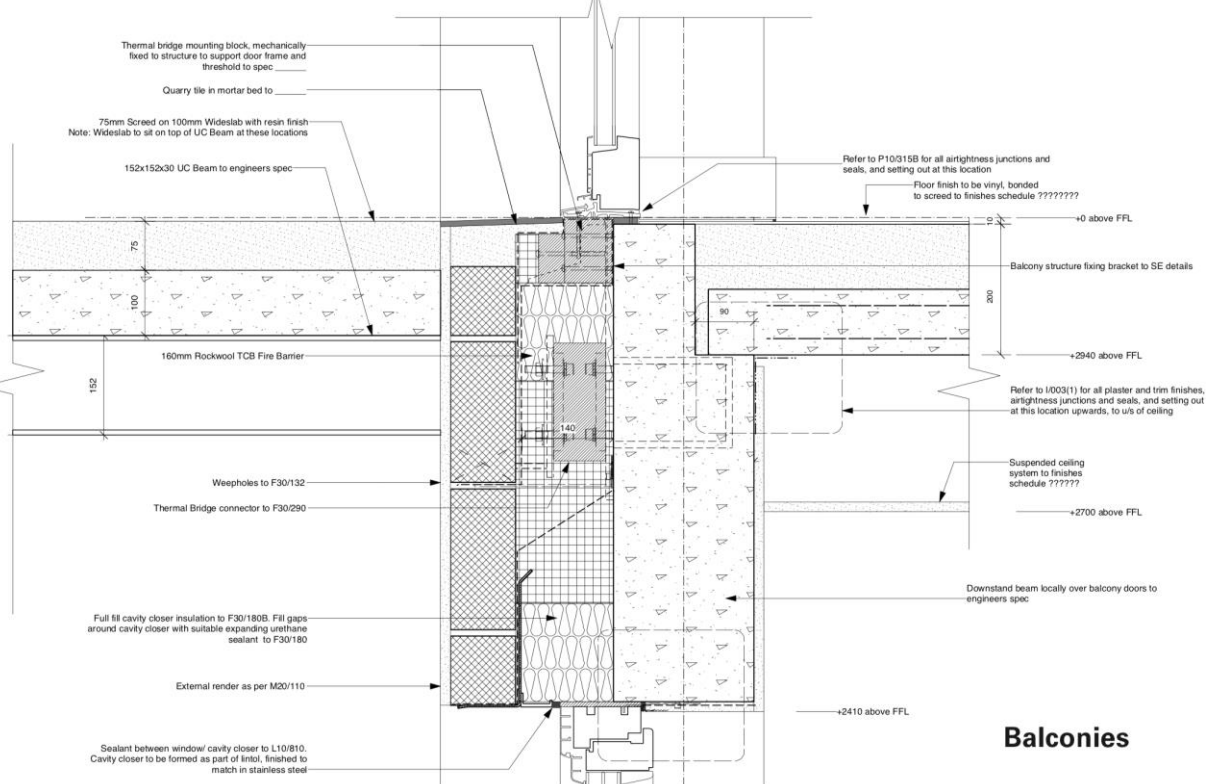


- Balconies for the scheme

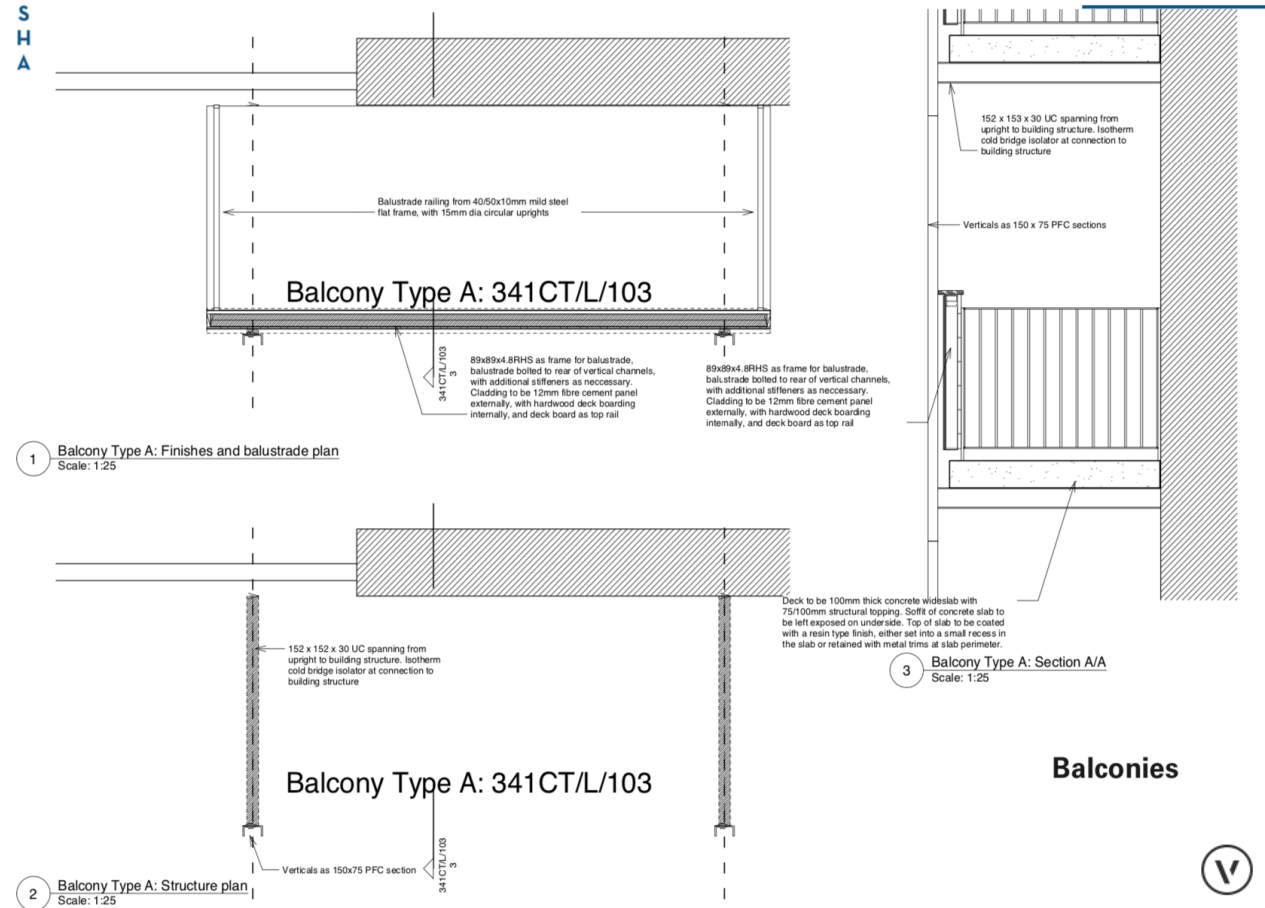




### • Balconies for the scheme



**Balconies**



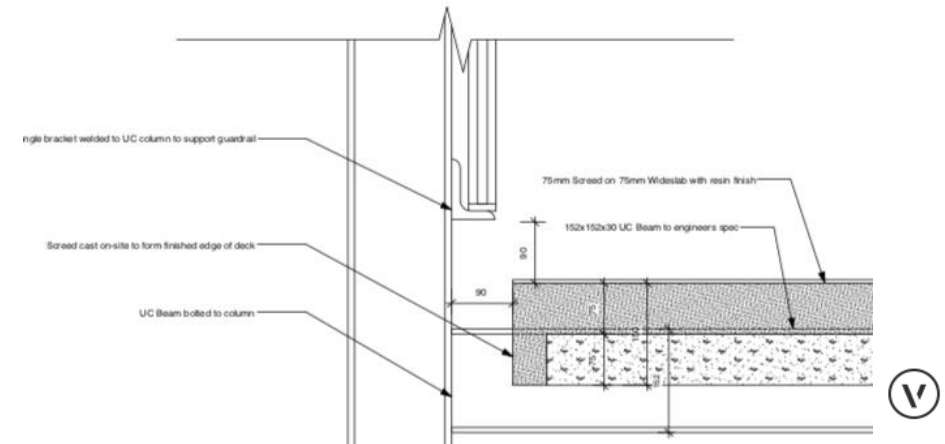




- Galleries and Walkways

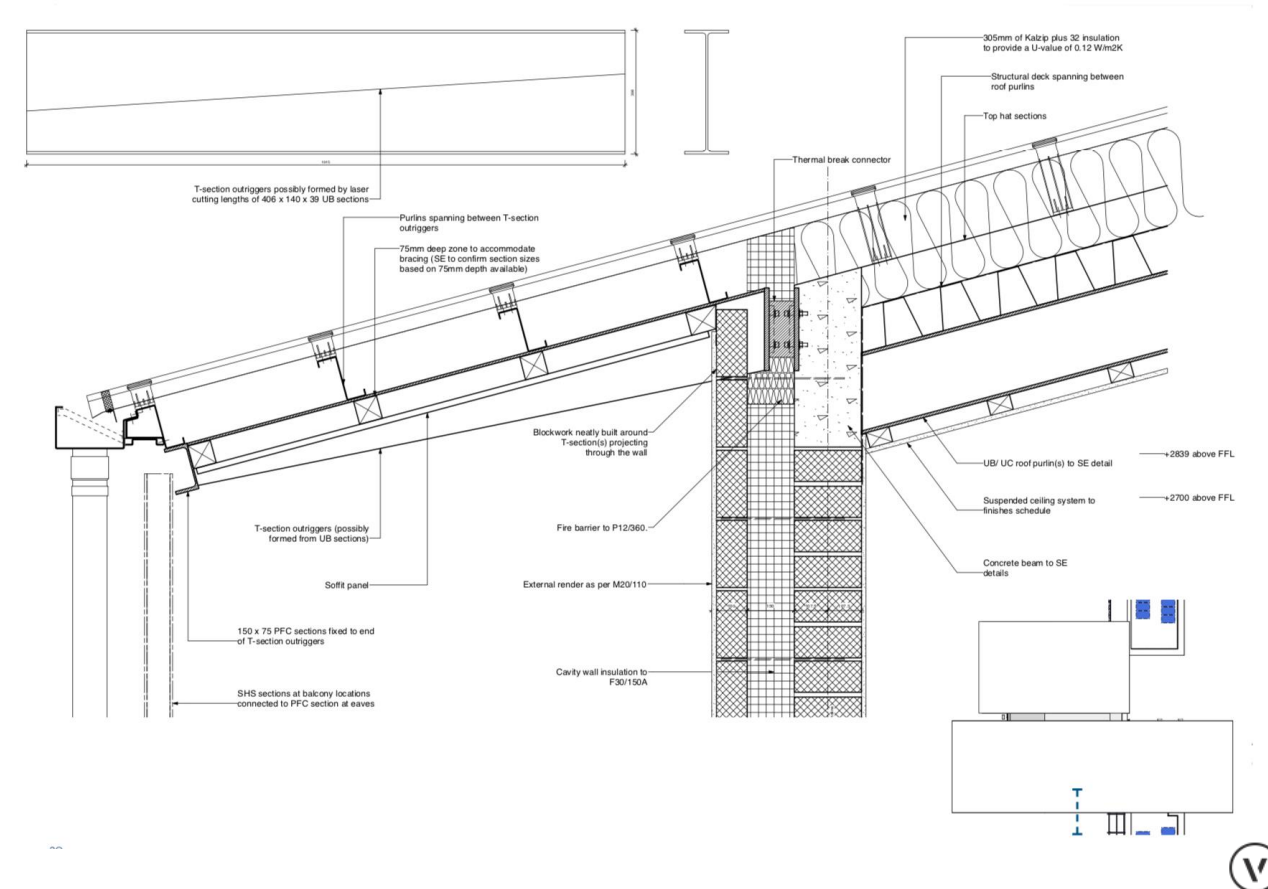
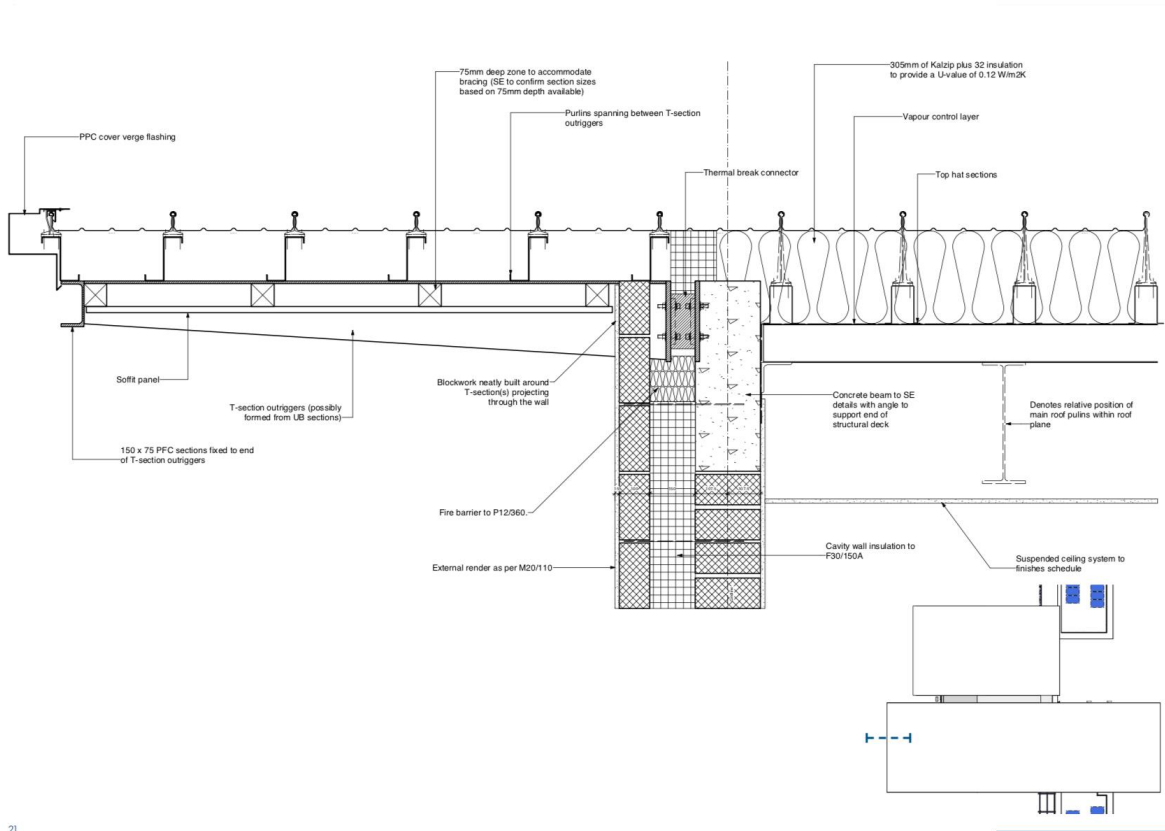








### • Pitched Roof Construction









- 3 separate building model files

S  
H  
A



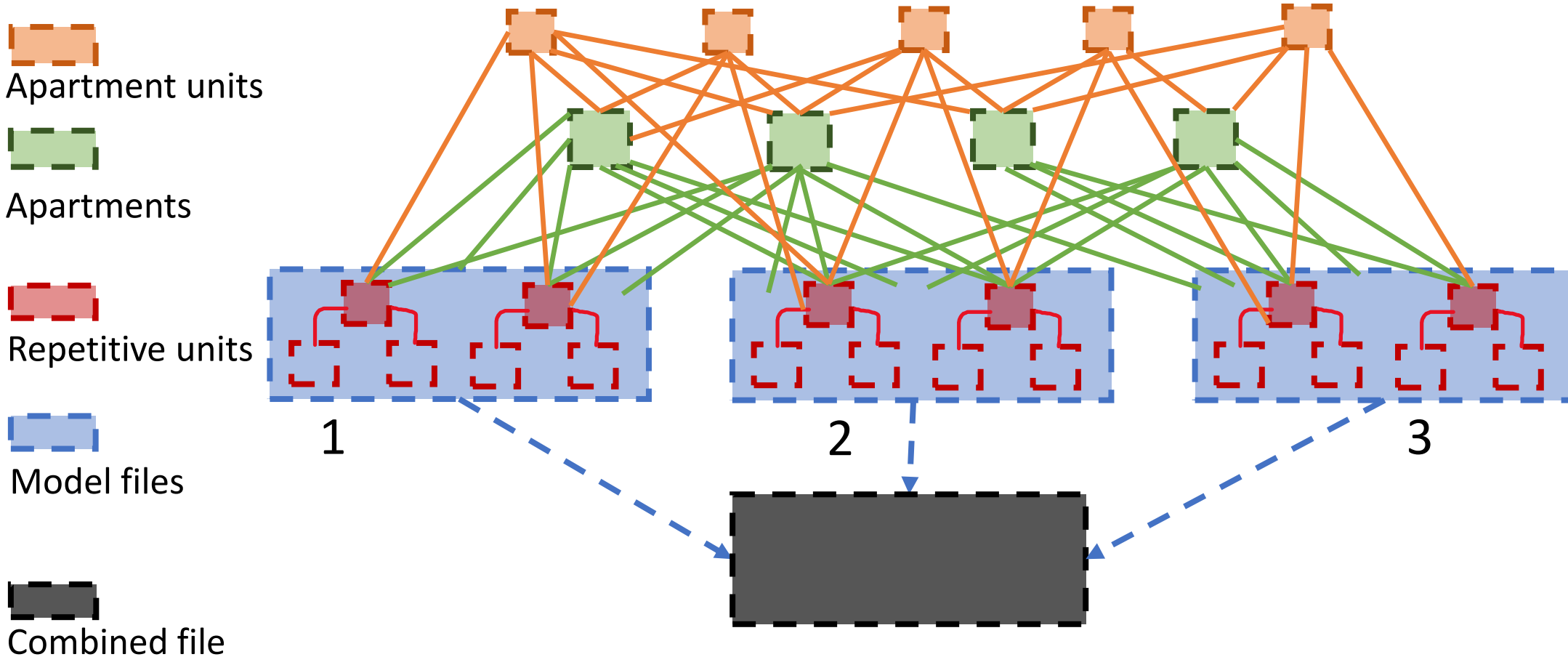
1 Proposed +0 Level Plan  
Scale: 1:200



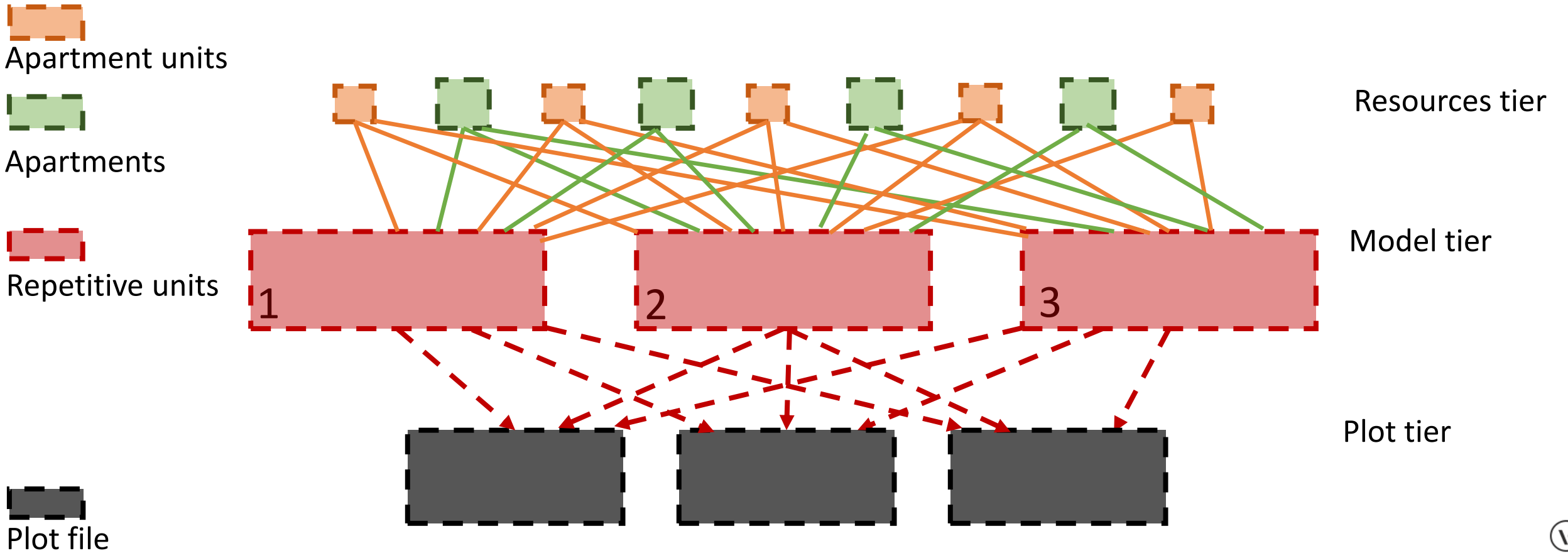
- Models of repetitive units referenced into each of the files
- Apartment units referenced into repetitive units

S  
H  
A









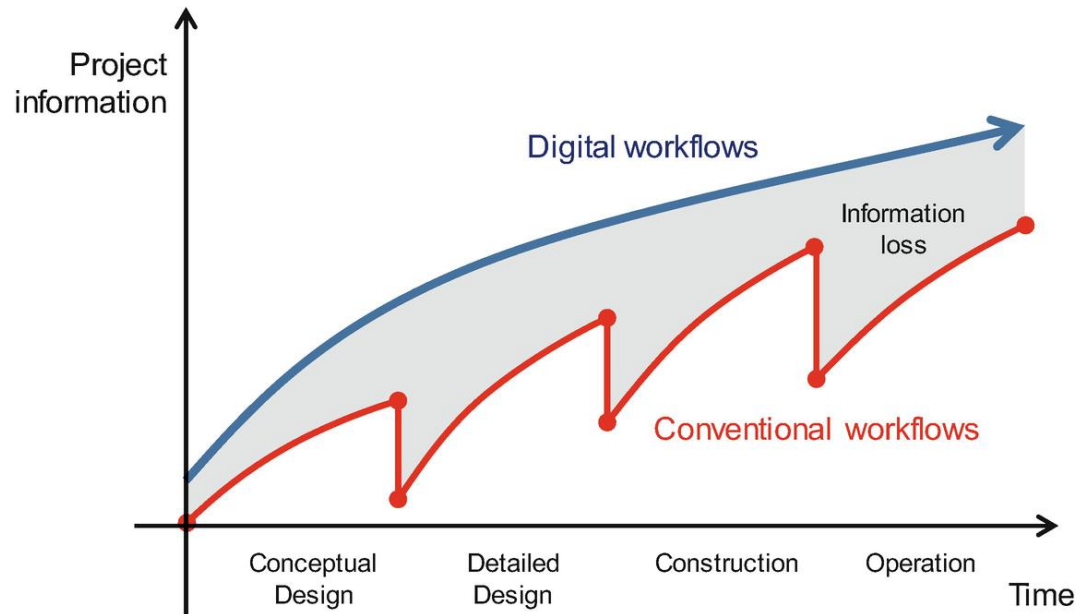


- Enabled unobstructed data flow at document production stage
- Brought file sizes down considerably
- Optimised workflows on the project
- Enabled better project and resource management
- Enhanced quality of IFC export and collaboration





- A team's shared data forms a 'single source of truth' and information for everyone across the project life cycle – dramatically reducing risk and enhancing collaboration at each stage and minimising information drop-off

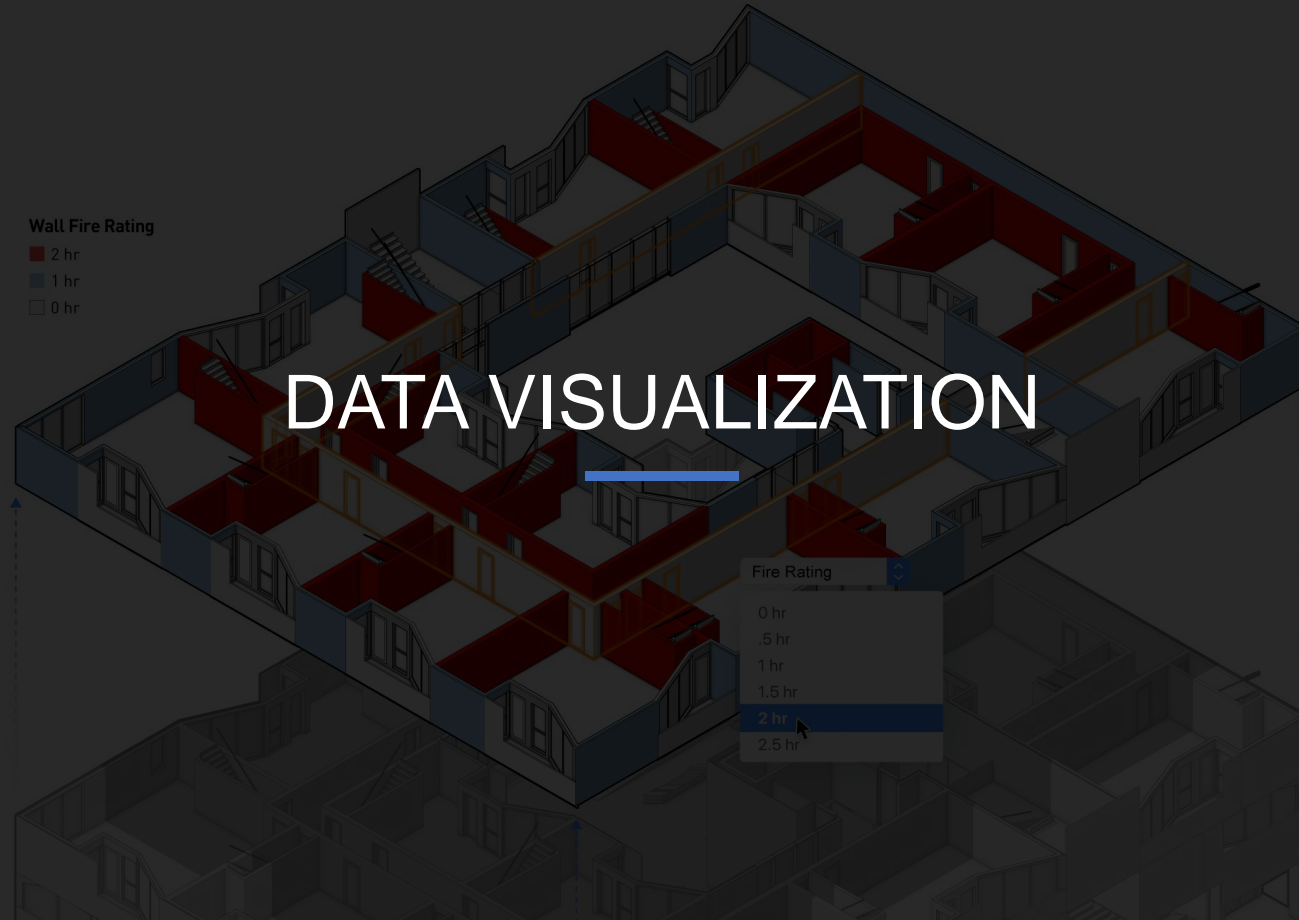






- Data enables many more options to be studied than by traditional means and performance can be simulated to prove that goals will be met
- Digital information can be visualised, to give stakeholders a clear 3D idea of proposals before they are committed







- Enhance BIM skills and workflows
- Project Sharing
- Quality of Data processing
- Delivery of Information
- Collaboration via IFC







Thank you