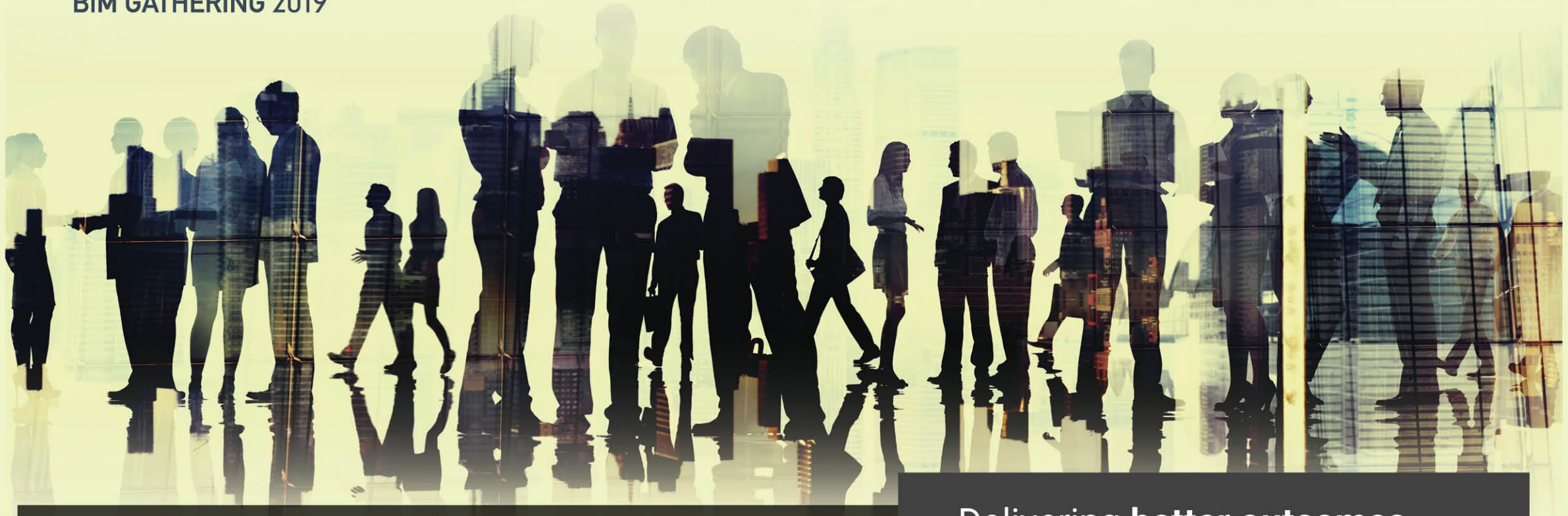


CitA

BIM GATHERING 2019



4th CitA BIM Gathering 26th September 2019, Galway, Ireland.

Delivering **better outcomes**
for Irish Construction



**Here's one I made earlier –
Create, Interrogate +
Construct**

**Lorraine McMorrow
BIM & Digital Construction Manager**

Offsite construction for a smarter tomorrow
mcavoygroup.com

Introduction

- The McAvoy Group and our digital journey
- How the latest advances in digital technology were applied to a pioneering project at Concordia Academy, Essex
- How the McAvoy Group create and interrogate information to validate before construction
- The synergy between offsite construction and digital technology



About The McAvoy Group

- One of the Ireland and UK's **leading offsite specialists**
- Independent, family-owned
- Over 200 employees
- Established **Principal Contractor**
- **Delivering high quality buildings** for education, healthcare, residential, commercial and infrastructure
- **Harnessing digital technology** to streamline processes and further improve the quality and efficiency of buildings

Smart facts

First offsite specialist to achieve BIM L2

Smart facts

Digital technology is core of our business

Smart facts

Delivering bespoke offsite solutions for 50 years

Smart facts

BIM Awards Contractor of the Year 2019

Smart facts

Multiple award - winners for digital technology

Smart facts

2 purpose-built offsite manufacturing centres spanning 150,000 sq.ft

Here's one I made earlier – Create, Interrogate + Construct

Volumetric Construction

- Series of 'Modules' or Units
- Bespoke shapes / sizes
- Approx 80% finished prior to dispatch
- Suitable for transport across the UK & Ireland



Here's one I made earlier – Create, Interrogate + Construct

Lynch Hill Enterprise Academy



Client: ESFA

Project Value: £20m

Type: 8,750m² 3 storey STEM school

Programme: 61 weeks



Here's one I made earlier – Create, Interrogate + Construct

Northumbria Specialist Emergency Care Hospital



Client: Northumbria Healthcare NHS Foundation Trust

Project Value: £15m

Type: 6,500m² 3 storey ambulatory care unit extension

Programme: 52 weeks



Passenger Boarding Zone, Dublin Airport



Client: Dublin Airport Authority

Project Value: €22m

Type: 2,200m² boarding facility to accommodate 8,000 passengers per day

Programme: 45 weeks



Here's one I made earlier – Create, Interrogate + Construct

Our digital journey



BIM Software
ArchiCAD

2007



Offsite construction for a smarter tomorrow

CitA
BIM GATHERING 2019

mcavoy
Smart Offsite

Here's one I made earlier – Create, Interrogate + Construct

Our digital journey



BIM Software
ArchiCAD

2007

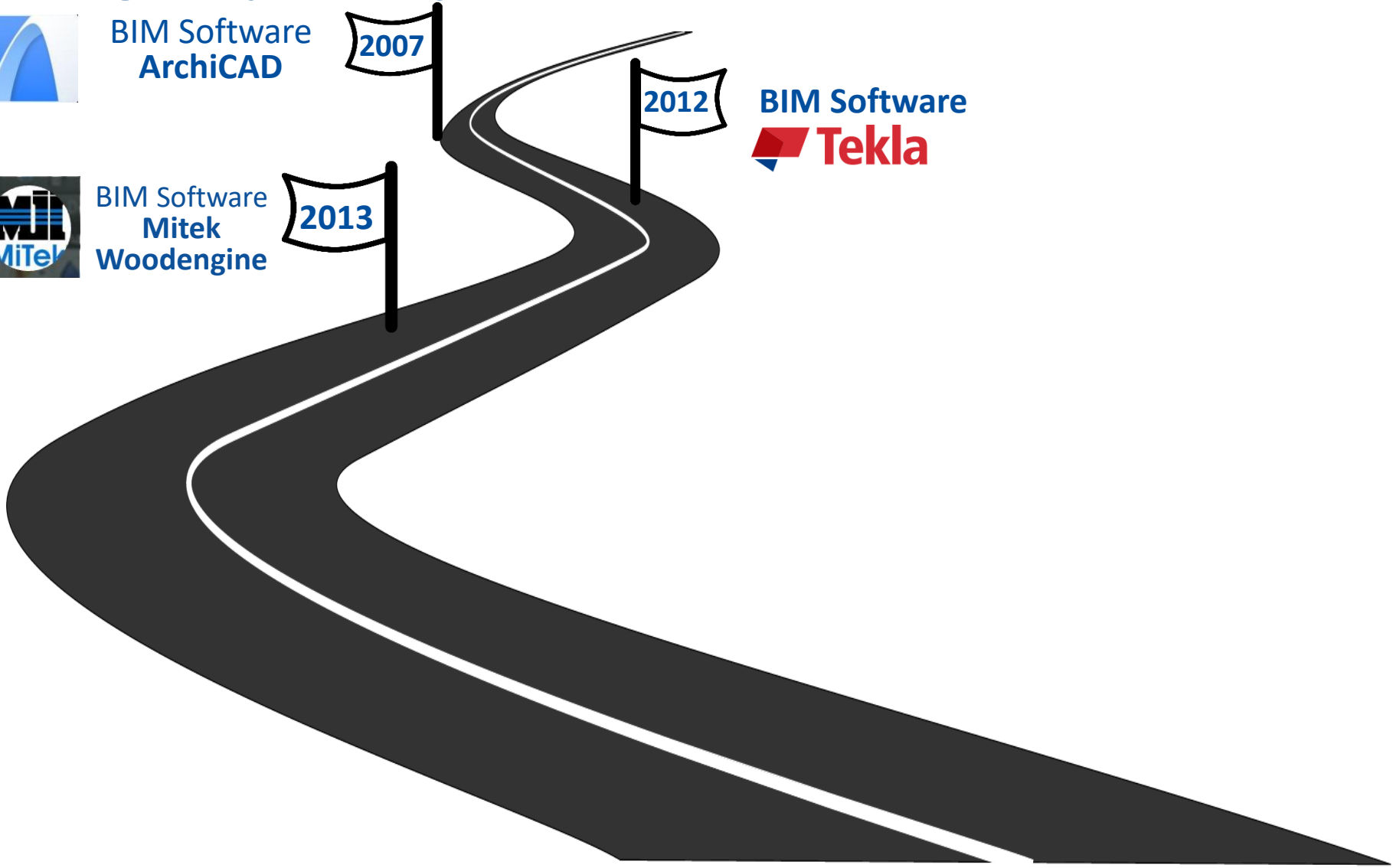


BIM Software
Mitek
Woodengine

2013

2012

BIM Software
Tekla



Our digital journey



2007



2013

2014



BIM Implementation Plan

Government Mandate BIM L2

2015

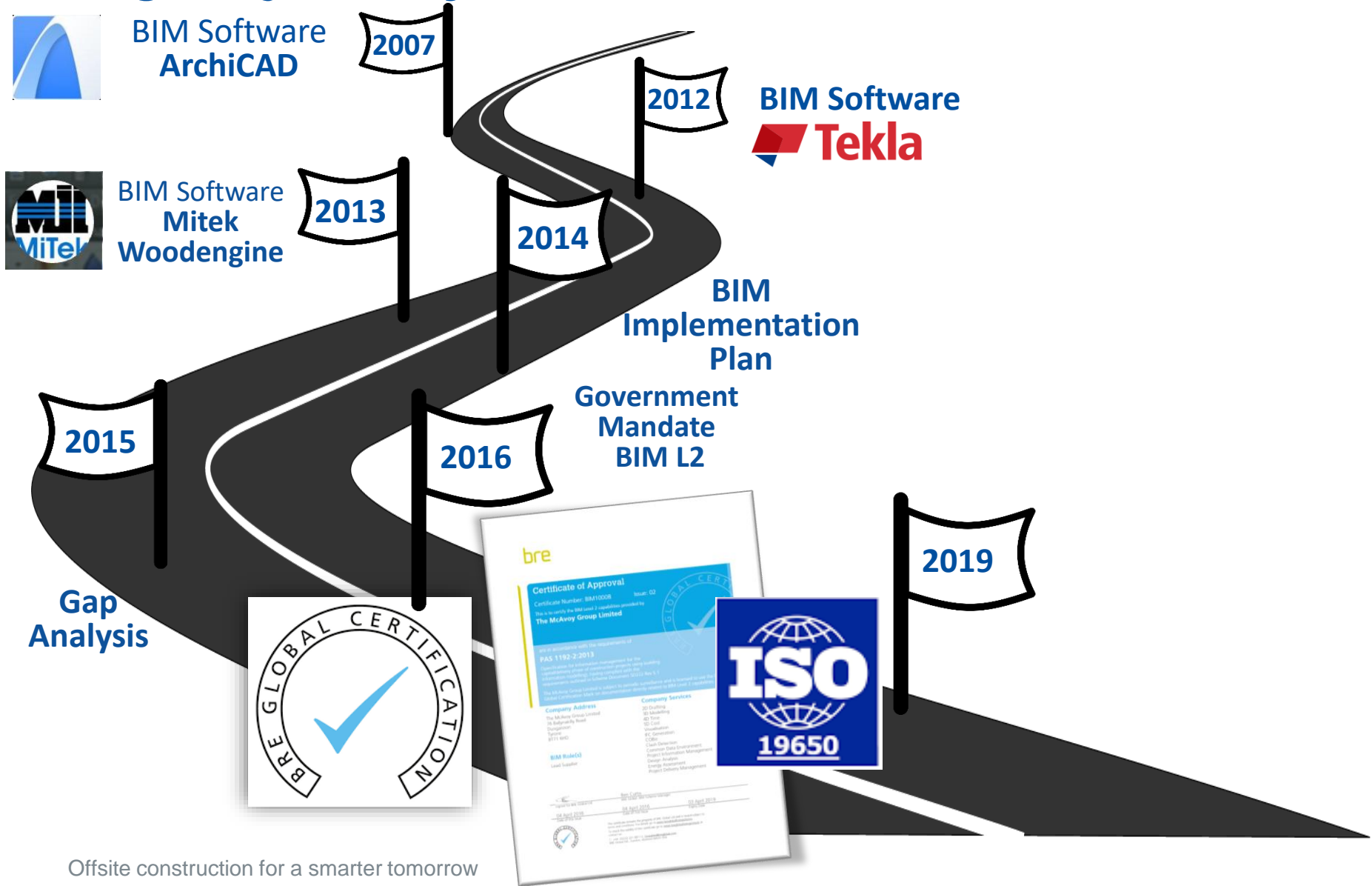
2016

Gap Analysis



Here's one I made earlier – Create, Interrogate + Construct

Our digital journey



Our digital journey



BIM Software
ArchiCAD

2007



BIM Software
Mitek
Woodengine

2013

2014

BIM Software
 Tekla

BIM
Implementation
Plan

Government
Mandate
BIM L2

2015

2016

Gap
Analysis



2019



Innovate UK

2020



What's next.....
Grow & Improve
Innovation R&D projects
Seismic

CASE STUDY – Concordia Academy, Essex

- **Client** Education & Skills Funding Agency
- **2,972m²** 4-storey primary school
- **630** student place
- Extensive use of BIM and virtual reality



Here's one I made earlier – Create, Interrogate + Construct



Here's one I made earlier – Create, Interrogate + Construct



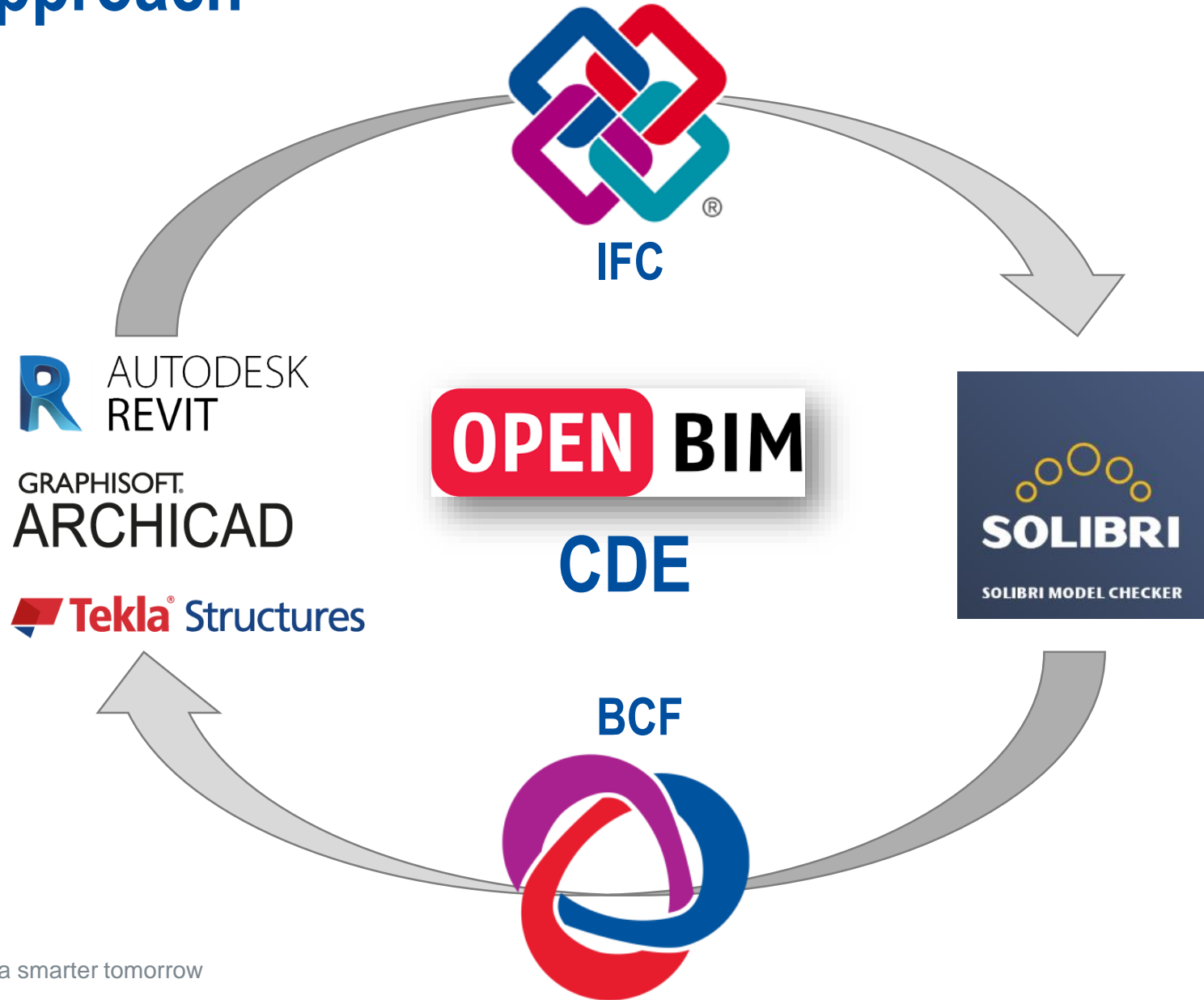
Digital Construction

It is a process of how we deliver projects in the most efficient way possible:

- **Streamlining** of processes
- More effective **collaboration**
- Better **quality** decisions
- **Shorter** design periods
- Improved client **engagement**
- Tremendous synergy with **offsite**



Open BIM Approach

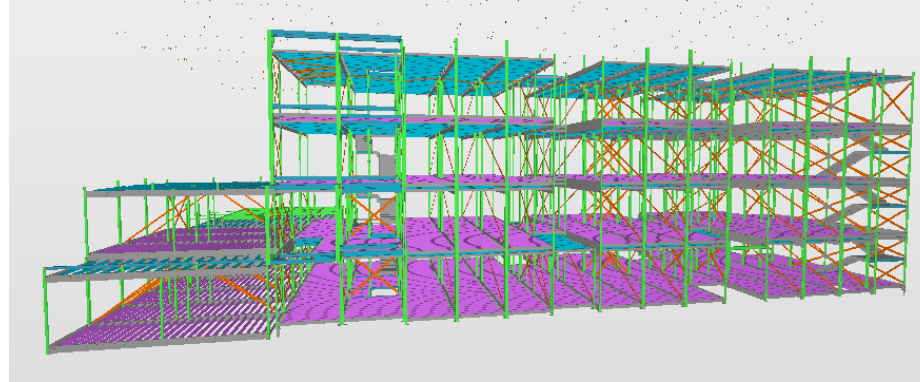


Create

- 3D modelling for enhanced collaboration
- Clash detection between modular structure and M&E elements
- Reduces risk of re-working in design, manufacture and on site
- Seamless construction



Collaboration



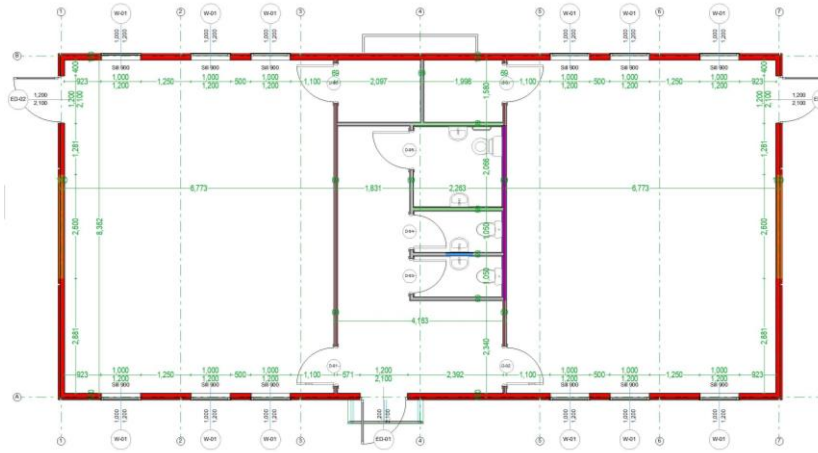
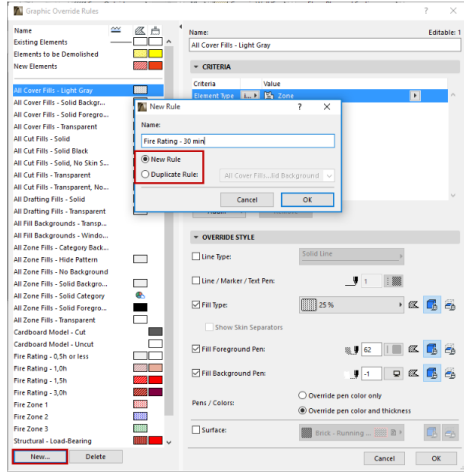
Create - ArchiCAD

-
- Rename Items
- ☐ Automatic Name
 Selected: 1
- ☒ Custom Name
 Insert Autotext
- <LAYOUTCUSTOMPAR1>--<LAYOUTCUSTOMPAR2>--<LAYOUTCUSTOMPAR3>--<LAYOUTCUSTOMPAR4>--<LAYOUTCUSTOMPAR5>--<LAYOUTCUSTOMPAR6>--<SourceID>--<SourceItemName>
- Preview:
- ABCDE-BBA-00-GF-DR-A-0001-GF GROUND FLOOR
- Cancel
Rename

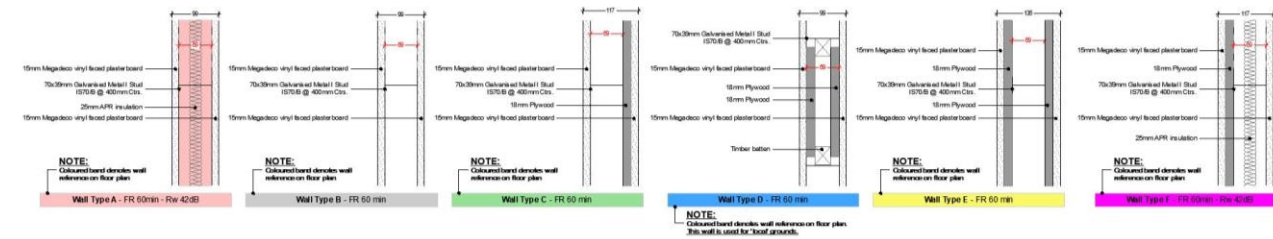


Here's one I made earlier – Create, Interrogate + Construct

Create - ArchiCAD



- Automation – scheduling, graphic overrides using attribute data
- Twinmotion – photo realistic renderings
- Collaboration



Create + Interrogate - Virtual Reality

- One click transition from ArchiCAD to VR with Fuzor plugin
- Bi-directional live link between ArchiCAD and VR with a request sync back to bring changes made in Fuzor back to ArchiCAD

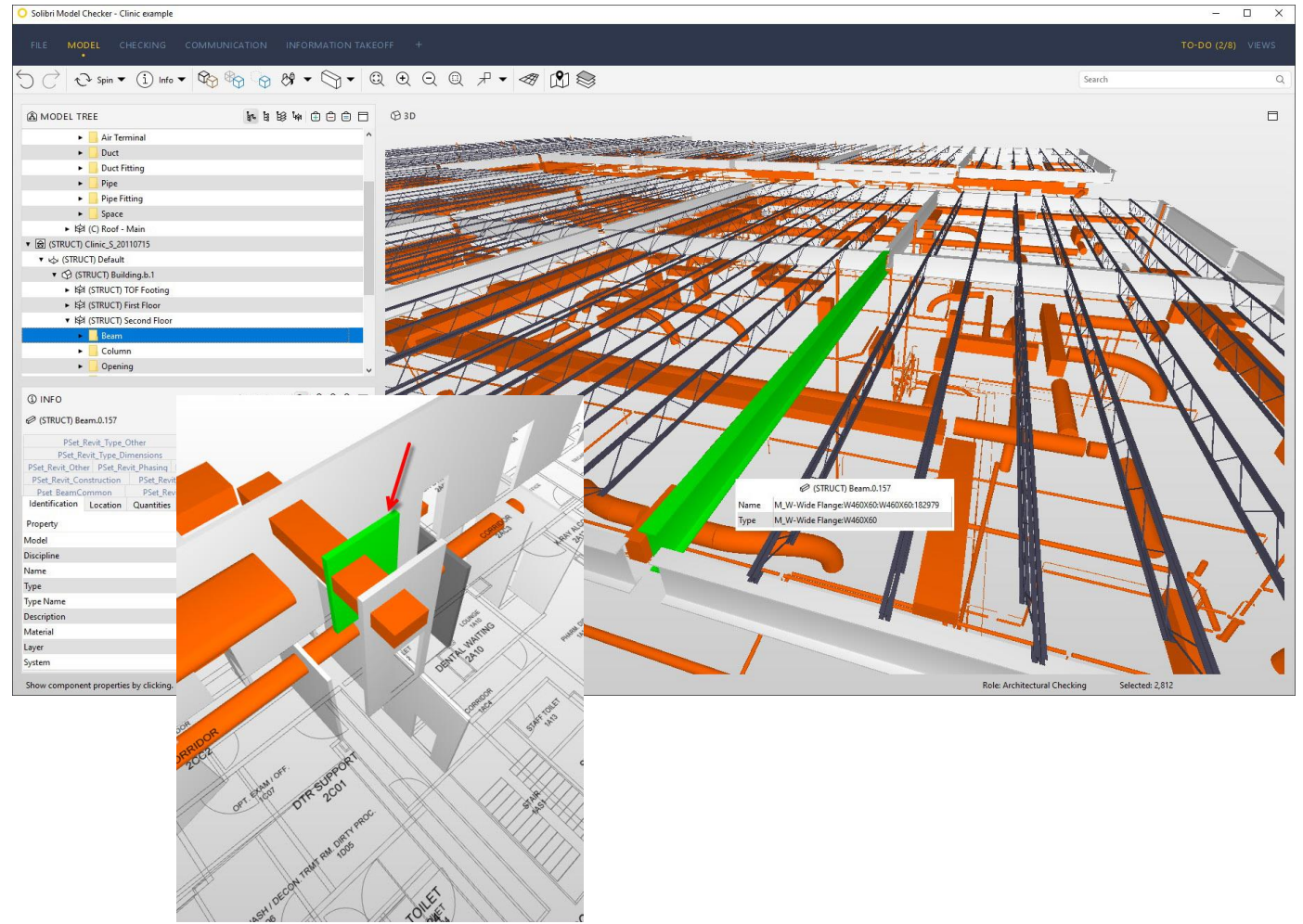
VR



Interrogate – Solibri Office

Coordination: Geometry v Data

- Federate IFC Models
- Quality Assurance
- Coordinate and Communicate - BCF
- Simplify and automate process
- Ruleset checking and verification



Here's one I made earlier – Create, Interrogate + Construct

Interrogate – Solibri Office

The screenshot displays the Solibri Office interface. On the left, the 'MODEL TREE' shows the project structure. The main view shows a 3D model of a building. Below the model, the 'COBie' table is visible, listing various building elements and their attributes.

A	B	C	D	E	F	G	H	I	J	K	L
34	Office...	R.Vigelskas@blueskyd...	2019-09-12T12:12:23	Unclassified	Ground Flo. Office	Autodesk Revit 2020 (ENU)	ICSpace	IDmsSQL	P-ADM05	n/a	4
35	Outdoor...	R.Vigelskas@blueskyd...	2019-09-12T12:12:23	Unclassified	Ground Flo. Unclassified	Autodesk Revit 2020 (ENU)	ICSpace	IDmsSQL	n/a	n/a	4
36	Outreach...	R.Vigelskas@blueskyd...	2019-09-12T12:12:23	Unclassified	Ground Flo. Outreach	Autodesk Revit 2020 (ENU)	ICSpace	IDmsSQL	P-OFF10	n/a	1
37	PE Store...	R.Vigelskas@blueskyd...	2019-09-12T12:12:23	Unclassified	Ground Flo. PE Store	Autodesk Revit 2020 (ENU)	ICSpace	IDmsSQL	P-STN00	n/a	1
38	PeaceO...	R.Vigelskas@blueskyd...	2019-09-12T12:12:23	Unclassified	Ground Flo. Peace	Autodesk Revit 2020 (ENU)	ICSpace	IDmsSQL	P-RES00-02	n/a	1
39	PeaceO...	R.Vigelskas@blueskyd...	2019-09-12T12:12:23	Unclassified	Ground Flo. Peace	Autodesk Revit 2020 (ENU)	ICSpace	IDmsSQL	P-RES00-03	n/a	1
40	PeaceO...	R.Vigelskas@blueskyd...	2019-09-12T12:12:23	Unclassified	Ground Flo. Peace	Autodesk Revit 2020 (ENU)	ICSpace	IDmsSQL	P-RES00-04	n/a	1
41	PeaceO...	R.Vigelskas@blueskyd...	2019-09-12T12:12:23	Unclassified	Ground Flo. Peace	Autodesk Revit 2020 (ENU)	ICSpace	IDmsSQL	P-RES00-05	n/a	1
42	Personal...	R.Vigelskas@blueskyd...	2019-09-12T12:12:23	Unclassified	Ground Flo. Personal St	Autodesk Revit 2020 (ENU)	ICSpace	IDmsSQL	P-STN01-000	n/a	1
43	Personal...	R.Vigelskas@blueskyd...	2019-09-12T12:12:23	Unclassified	Ground Flo. Personal St	Autodesk Revit 2020 (ENU)	ICSpace	IDmsSQL	P-STN01-01	n/a	1

Data Validation

- Rulesets for checking attribute data
- Improved modelling standards
- COBie validation
- Information Take Off

Construct

- Coordinated and validated information
- Communication
- 4D & 5D Analysis
- Optimised assembly information
- Data to CNC Machines
- Quality Control



Here's one I made earlier – Create, Interrogate + Construct

Construct



The Client's Perspective

“The new school provides much needed primary school places for the local community in Romford. It has created an inspiring environment for high quality education provision, and an outstanding school to help every child realise their highest aspirations. Our children are benefiting from plenty of space in the teaching areas, there is lots of natural light and the main hall is a good size with excellent acoustics”

Raheel Akhtar, Headteacher, Concordia Academy

Here's one I made earlier – Create, Interrogate + Construct

Conclusion



Thank you

Lorrainemcmorrow@mcavoygroup.com

@LorMcMorrow



Thank you