

Michael Earley



Michael Earley

Dip Arch Technology
BSc Computer Science (Hons)
MRIAI (Tech), Member Irish Computer Society

Associate at Scott Tallon Walker Architects

Responsible for Building Information Modelling and
Software Systems

Graduate of Dublin School of Architecture (DIT) and Trinity College
Dublin

Lecture on BIM Execution Planning on MSc in Construction Informatics.

Member of RIAI BIM subcommittee
Member RIAI ATC Committee
Member Irish Computer Society

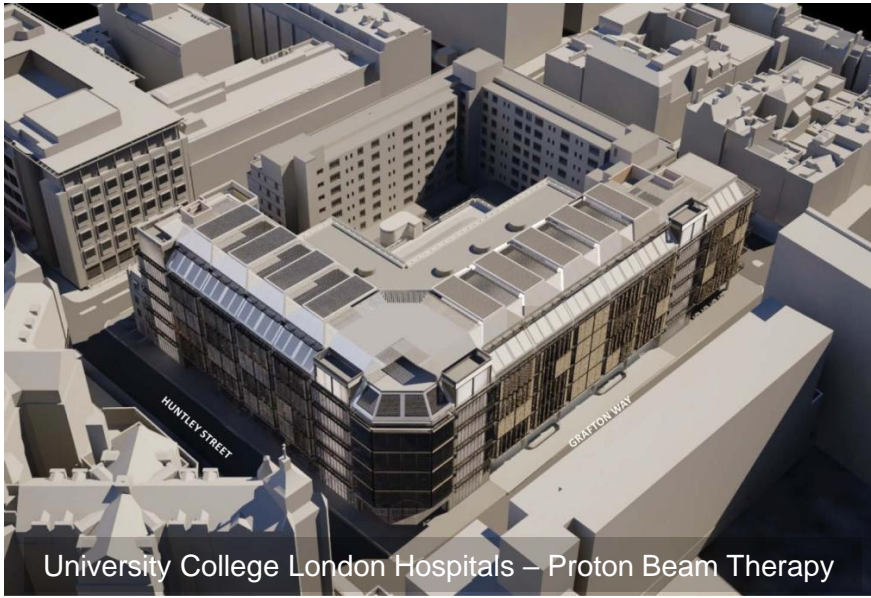


Trinity College Dublin
Coláiste na Tríonóide, Baile Átha Cliath
The University of Dublin

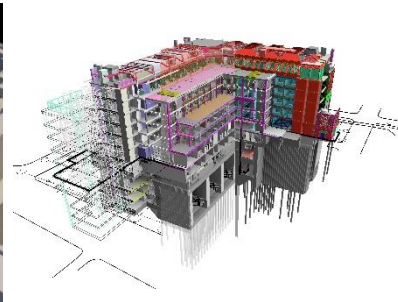


THE SOCIETY
FOR CHARTERED
IT PROFESSIONALS
IN IRELAND

Scott Tallon Walker Architects - BIM (UK)



University College London Hospitals – Proton Beam Therapy



Nuffield Cardiac Care Centre



University of Surrey – 5G



University of Surrey – EFHB



Jenner Building – Pirbright Institute

Scott Tallon Walker Architects - BIM (Northern Ireland)



Scott Tallon Walker Architects - BIM (Ireland)



Trinity Business School



Student Housing - Cork



Arthur Cox Headquarters



Brewery Quarter Arena - Cork

Trinity Business School – BIM for Education



Scott Tallon Walker Architects

Trinity Business School – Project Team

Design Team

Architects: Scott Tallon Walker Architects
Structural/ Civil Engineer: Arup
Façade Engineer: Arup
Mechanical & Electrical Engineer: IN2

Project Manager: Turner & Townsend
Quantity Surveyor: Turner & Townsend
PSDP: Turner & Townsend
Fire Engineer: Michael Slattery and Associates
Acoustics: AWN Consulting
Sustainability: IN2
Planning Consultant: Tom Philips and Associates
Conservation Architect: David Slattery Conservation Architects
BCAR Consultant: Procert
Landscape Architect: Mitchell & Associates
Catering Design: QA Design

Construction Team

Enabling Works: BAM
Main Contractor: JJ Rhatigan and Company
Mechanical Services Contractor: T Bourke
Electrical Services Contractor: Designer Group

BIM Authors

BIM Contributors

Trinity Business School – The Building

Trinity College Dublin is ranked 88th in the world, 22nd in Europe, combining advanced research and scholarship with an educational environment that values the whole student experience.

The Trinity Business School is a strategic part of the future of Trinity College – provide graduates with ability to **manage change consciously, carefully with insight and discipline.**

Accommodation:

The School of Business

Innovation and Entrepreneurship Hub

Auditorium

Restaurants

Pearse Street Terrace Refurbishment (Protected Structures)

Key Statistics

Site Area: 5,200 m²

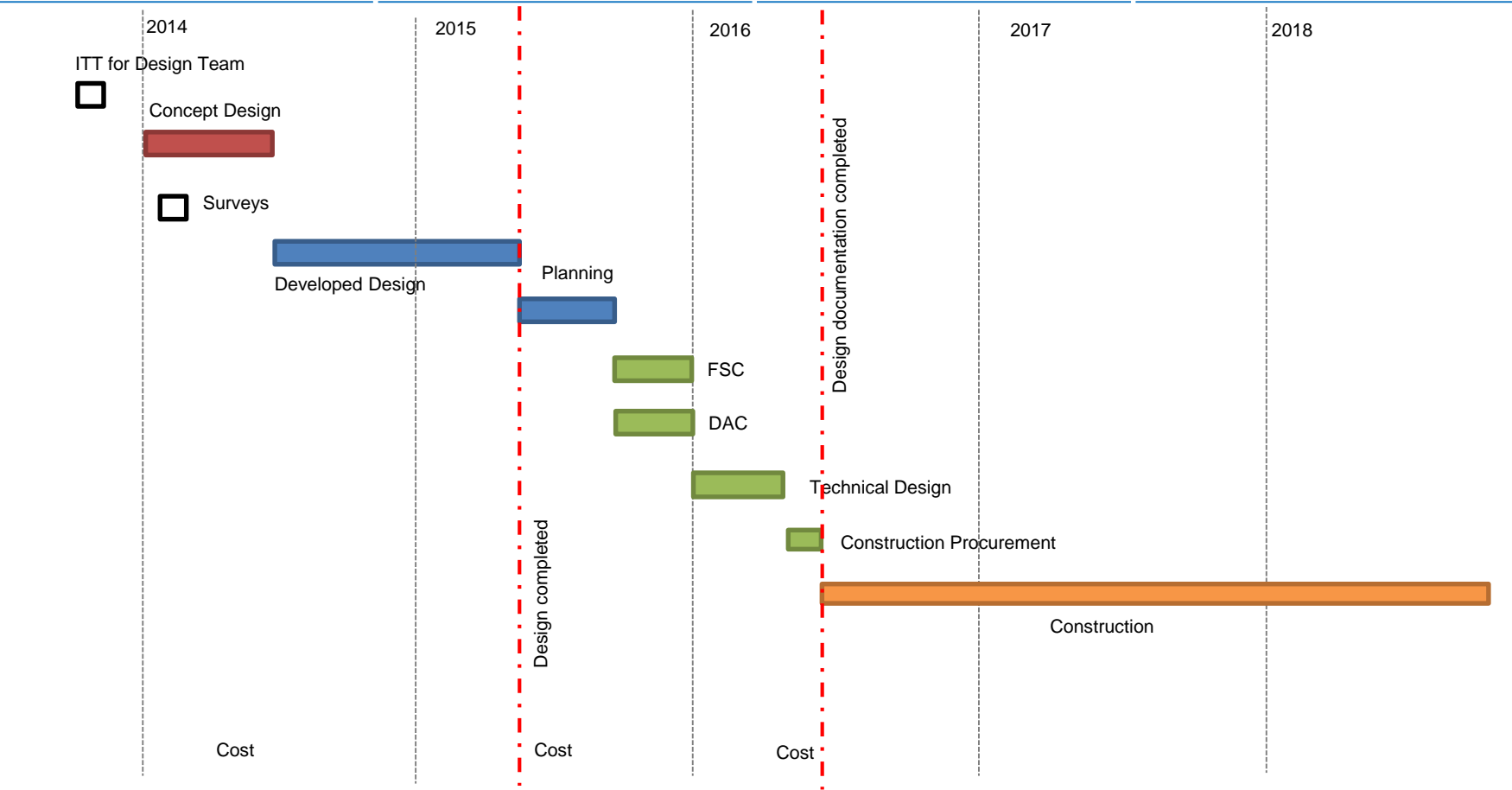
Gross Internal Area: 14,155 m² including protected structures

Contract / Delivery Type: Irish Government Public Works Contract - PWC-CF1 v2.0 Jan 2016.

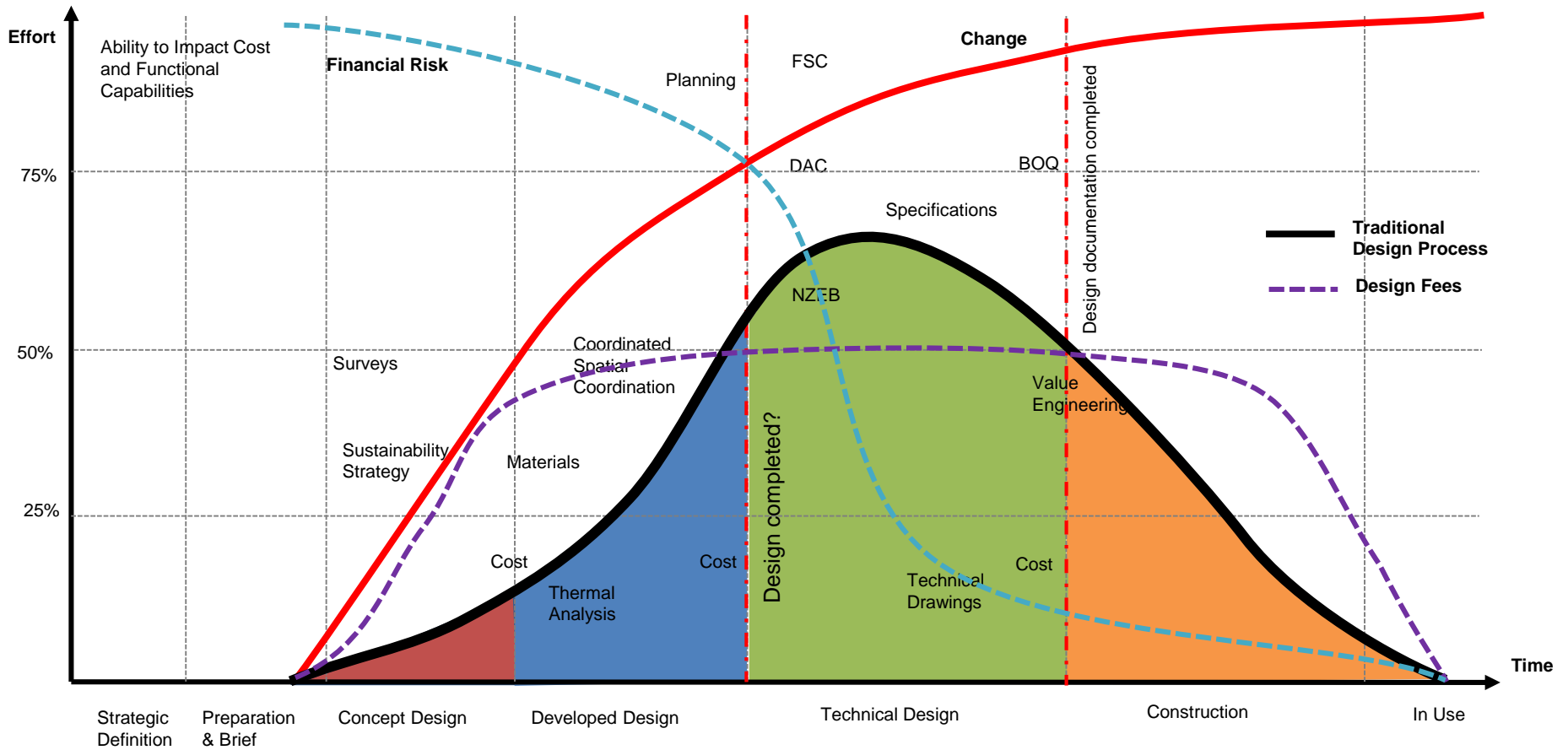
BIM: Level 2 BIM in accordance with PAS1192-2:2013

Sustainability: NZEB, BER A2

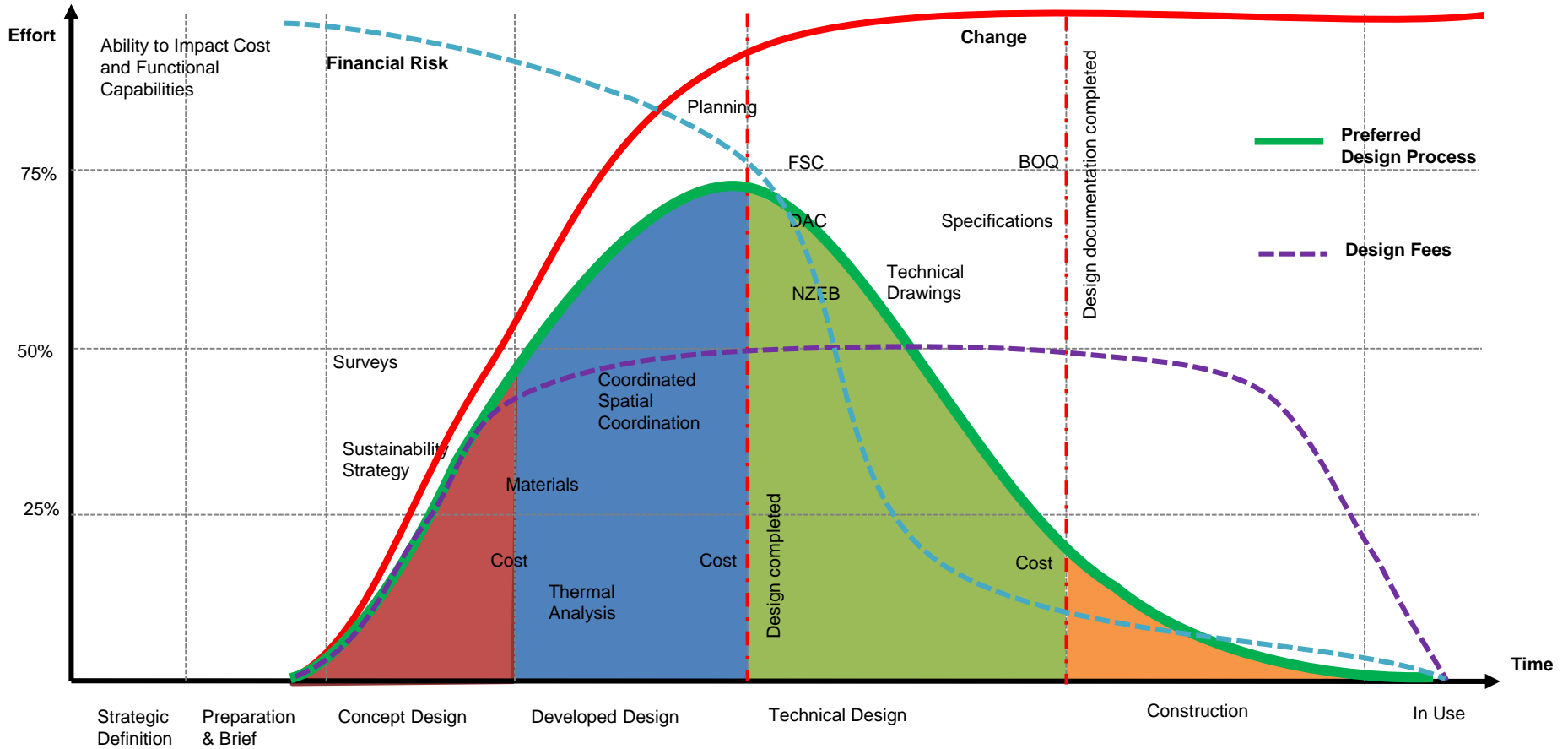
Trinity Business School – Programme



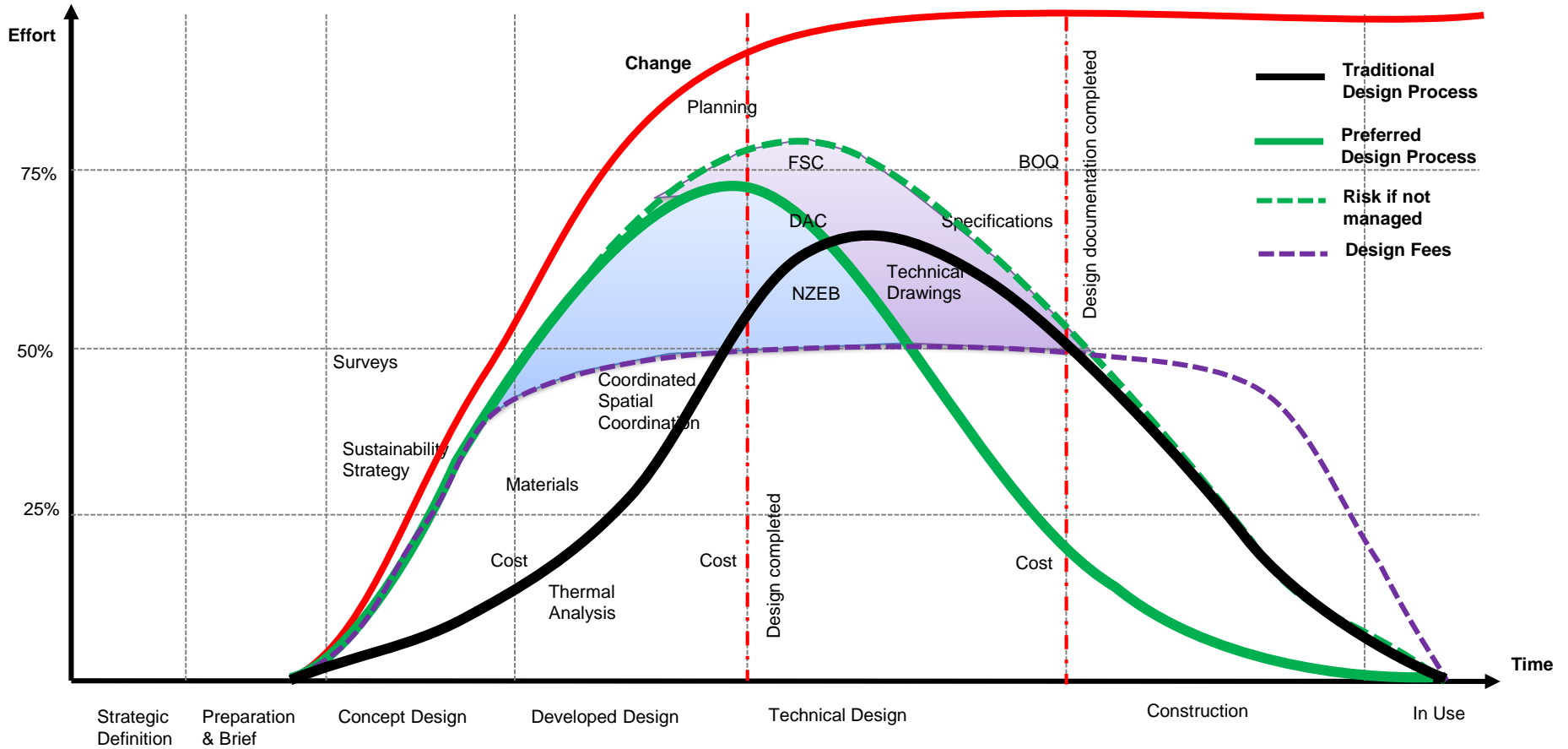
BIM – Change – Traditional Design Process



BIM – Change – PWC Contract



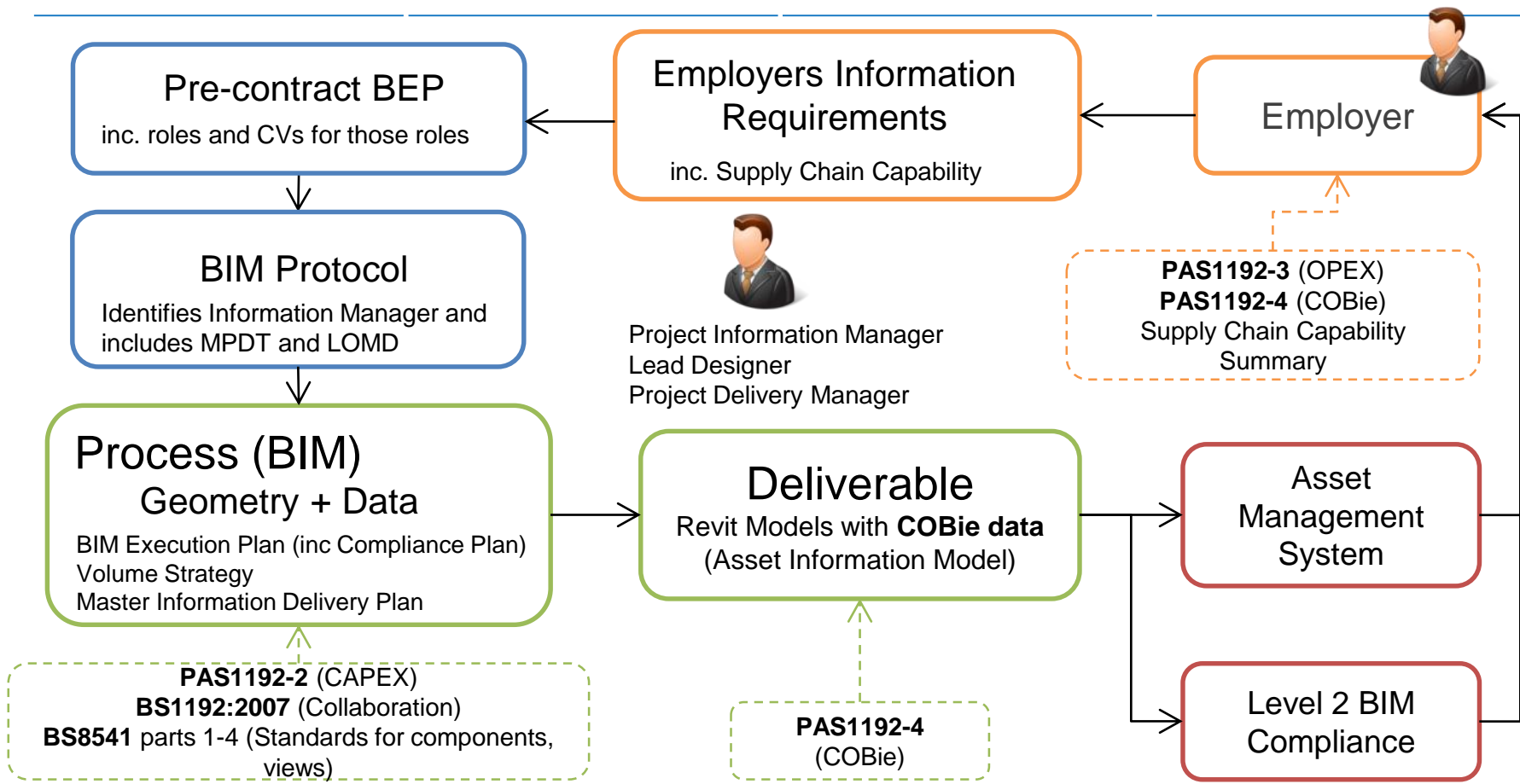
BIM – Change – Comparison of Traditional / PWC (Risk)



BIM – Lessons Learned

1. **Client brief** needs to be more prescriptive about design information (EIR).
2. **Contract documents** need to include requirement for BIM (BIM Protocol / MPDT).
3. **Information Manager** required to ensure BIM documentation is in place and adhered to (BIM Execution Plan).
4. All participants need to understand the **supply chain requirements** for design information (Digital Plan of Work / LOD / LOI).
5. Designers need to exchange **better quality** information (BIM Execution Plan / Digital Plan of Work / LOD / LOI).
6. Designers need to exchange design information **earlier**.
7. Design exchanges need to be more **frequent**.
8. **Clash detection** needs to commence sooner with **information that is suitable for purpose**.
9. Majority of **design changes** need to be completed before Technical Design commences otherwise risk of cost and programme overruns.
10. All design information should be derived from models – there must be **confidence in the quality of information in models**.

BIM Level 2 - Workflow



BIM Level 2 – Standards (<http://bim-level2.org/en/standards/>)

BIM LEVEL 2

Home About BIM Level 2 Standards Guidance Events Tools FAQs Glossary

BS 1192:2007+A2:2016

BRITISH STANDARD

Collaborative production of architectural, engineering and construction information – Code of practice

BSI
British Standards

NO COPYING WITHOUT BSI PERMISSION EXCEPT AS PERMITTED

CAPEX

PAS 1192-2:2013

Specification for information management for the capital/delivery phase of construction projects using building information modelling

PAS 1192-3:2014
Incorporating Corrigendum No. 1

Specification for information management for the operational phase of assets using building information modelling

COBie

BSI Standards Publication

Collaborative production of information
Part 4: Fulfilling employee exchange requirements
Code of practice

bsi. *...making excellence a habit[®]*

PAS 1192-5:2015

Specification for security-minded building information modelling, digital built environments and smart asset management

Health & Safety

PAS 1192-6:2018

Specification for collaborative sharing and use of structured Health and Safety information using BIM

Collaboration

bsi.

OPEX

Security

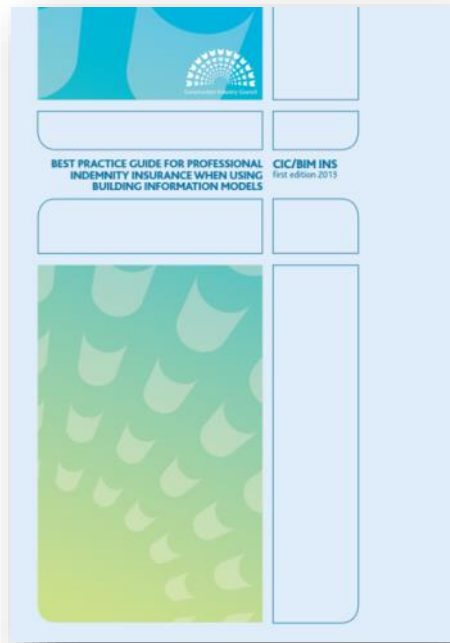
CPNI

bsi.

BIM Level 2 – Best Practice



Information Manager



Insurance



Contracts

BIM Level 2 – RIAI

RIAI.IE

Choose an RIAI Site

Welcome, Guest : [Login](#) | [Help](#) | [Contact Us](#)



Enter Search Terms

PROMOTING SUPPORTING
REGULATING ARCHITECTURE

THE ROYAL INSTITUTE OF THE ARCHITECTS OF IRELAND

[About](#) [Working with an Architect](#) [Architects' Register](#) [Practice Directory](#) [Architectural Technologists](#) [Admissions](#) [CPD](#) [Education](#) [News](#) [Jobs](#)

Working with an Architect

[Home](#) » [Working with an Architect](#) » [Public & Commercial Projects](#) » [Building Information Modelling \(BIM\)](#)

Building Information Modelling (BIM)

RIAI Employers Information Requirements Template (EIR)

The Employers Information Requirements (EIR) template and guidance document are intended to support Employers undertaking BIM Level 2 in accordance with PAS 1192-2:2013. The EIR should be incorporated into the tender documentation, to enable suppliers to produce their Pre-contract BIM Execution Plan (BEP) upon which their proposed approach, capability and capacity can be evaluated prior to contract award. The EIR is also a key document with regards to communicating information requirements as well as establishing information management requirements and will act as a good basis from which to review the contents of the bidder's BIM Execution Planning, confirming its completeness.

The RIAI practice sub-committee for BIM have produce a draft blank template, as well as a 2nd version which contains some suggested text and guidance notes. RIAI members can use these to help their clients define the requirement on project where BIM is being used.

[Download RIAI Employers Information Requirements Template P1 2 .Word.doc 62KB](#)

[Download RIAI Employers Information Guidance Template P1 2. PDF File](#)

Working with an Architect

[Working with an architect - Your Home](#)

[Extending Your Home](#)

[Improving Energy Efficiency](#)

[Building a New Home](#)

[Buying a New Home](#)

[Top Tips from Architects](#)

[Public & Commercial projects](#)

[↳ Finding an RIAI Practice](#)

[↳ RIAI Architect Services](#)

[↳ Appointing an architect](#)

Trinity Business School – Presenters

Michael Earley – Scott Tallon Walker Architects

Greg Power – Trinity College Dublin

Liam Farrelly – Scott Tallon Walker Architects

Adrian Ryan – Arup

Celine O'Connor – JJ Rhatigan and Company

