

CitA
BIM GATHERING



Building Capabilities in Complex Environments

CitA BIM Gathering 2017, Croke Park, November 23rd & 24th, 2017

Cita
BIM GATHERING



Implementing 5D from a PQS Perspective)





1. INTRODUCTION

- KSN
- Cian Clancy
- BIM & PQS

2. 5D COST CONTROL

- Why
- How

3. OBSTACLES AND CHALLENGES

4. OVERCOMING THE “INSURMOUNTABLE”

5. QUICK WINS

6. BIM CAPABILITIES

1. INTRODUCTION – KSN

CITA
BIM GATHERING



INTRODUCTION TO KSN

- Irish construction consultancy firm - established 1991
- 140 + Surveyors, Projects Managers & Energy Teams (specialised divisions)
- Directors “hands on” approach – direct involvement in every KSN project
- Actively involved in industry studies incl. BIM, LCC, Contract Law, Value Engineering, Cost Studies
- RLB Euro Alliance – Access to international knowledge; European sharing of data, cost & commercial information
- 60 Surveyors – 7 QS teams – 1 BIM champion per team
- KSN BIM implementation sample projects: Large scale retail, health, schools, high spec commercial developments





Cian Clancy **MSCSI MRICS**

- Senior Quantity Surveyor with 7+ years PQS Experience
- Joined KSN early 2017
- Working directly with KSN's BIM Lead Paul Brain
- BIM Experience: Large Scale Retail, High Specification Commercial, Universities & Data Centres (UK & Ireland)
- BSc Construction Economics (WIT – 2010)
- BSc (Hons) Quantity Surveying (WIT – 2012)
- Pg.Dip. Construction Law & Adjudication (RGU – 2017)





BIM & PQS IMPLEMENTATION – SUMMARY



- Roadblocks: Learning (new skills / software)
- Remedy: Investment – willingness / time / software

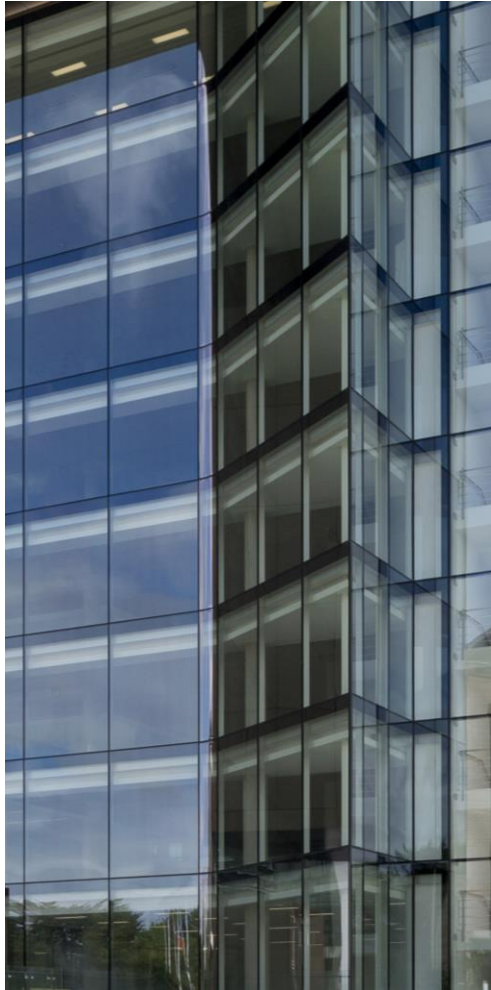
RESULT:



INCREASED	DECREASED
Added Value	Quantity Take Off
Efficiency	Time
Accuracy	Cost



2. 5D COST CONTROL – WHY?



WHY DID KSN GET INVOLVED IN BIM?

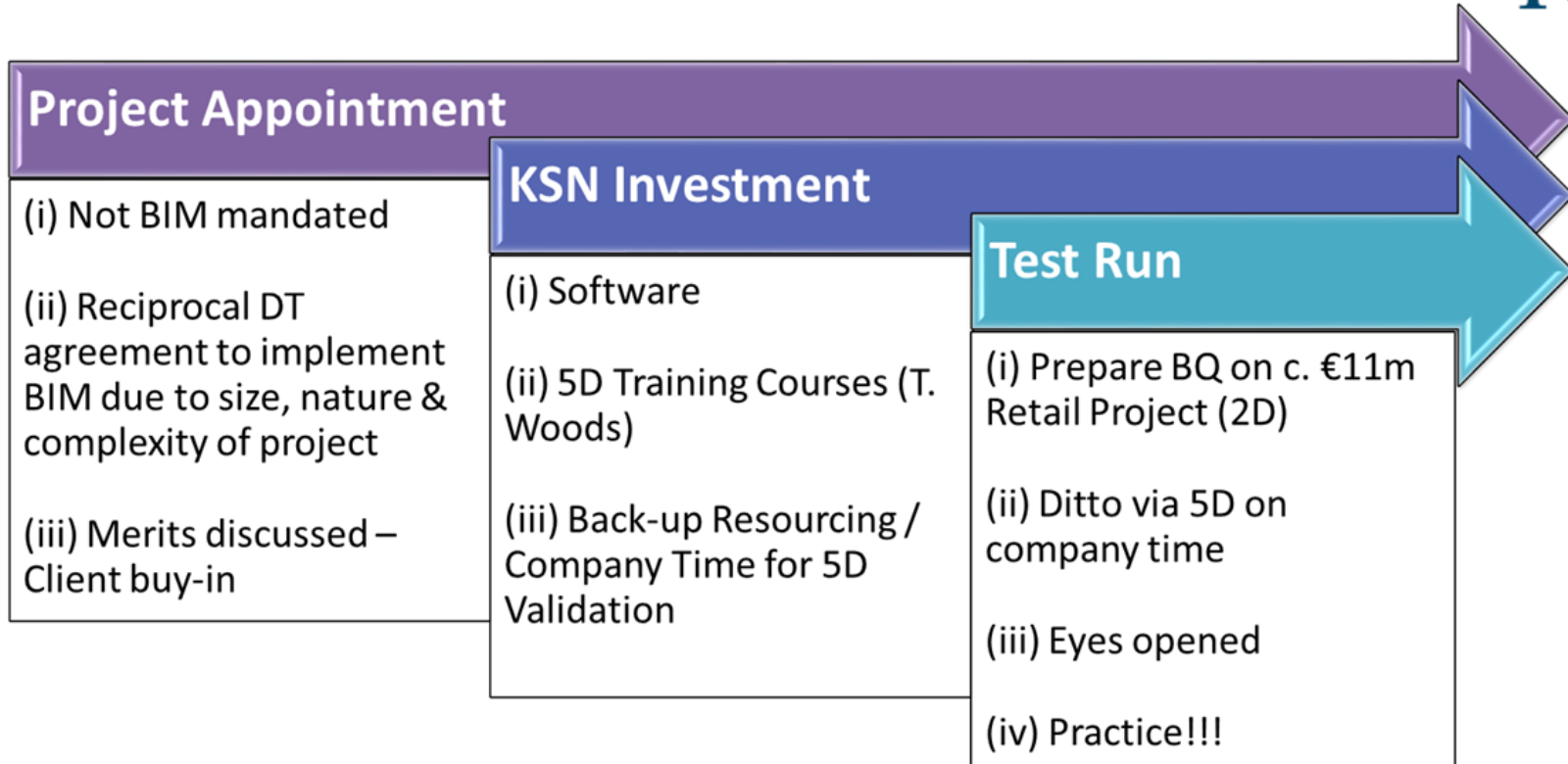


- a) Downturn
- b) Shift in industry
- c) Benefits
- d) Senior Management involved in BIM Working Groups (SCSI, CitA, etc.)
 - Guidance Notes
 - Working Groups
 - CPD Lectures

2. 5D COST CONTROL – HOW?



HOW DID KSN IMPLEMENT BIM?



❖ IMPLEMENTATION (FEASABILITY, COST PLANNING, TENDER BOQ'S)

3. OBSTACLES AND CHALLENGES



QS INDUSTRY

- Understanding Models
- Expectation (Push Button = Full ARM BQ)
- Faith / Scepticism in Models (Professional Judgement)

WORKFLOW / TRANSITION

- Change in Works Sequencing
- Hybrid of 2D & 5D (not all objects modelled understanding the process)
- Validation (Tangible & Non-Tangible)
- QS set parameters



WISHES

- Willingness
- Trial (Investment in Staff & Time)
- Senior Management Support
- Drive to Promote Efficiency and continuously improve services offered

Industry & Education

- DT considerations: QS BIM specific requirements
- Third Level Buy-In (Recruit Industry Experts for Student Demonstration Workshops)



- Added Value
- Improved / Additional Services Available
- Fluid Review of Quantities (one location – not flicking through volumes of drawings)
- Efficiency

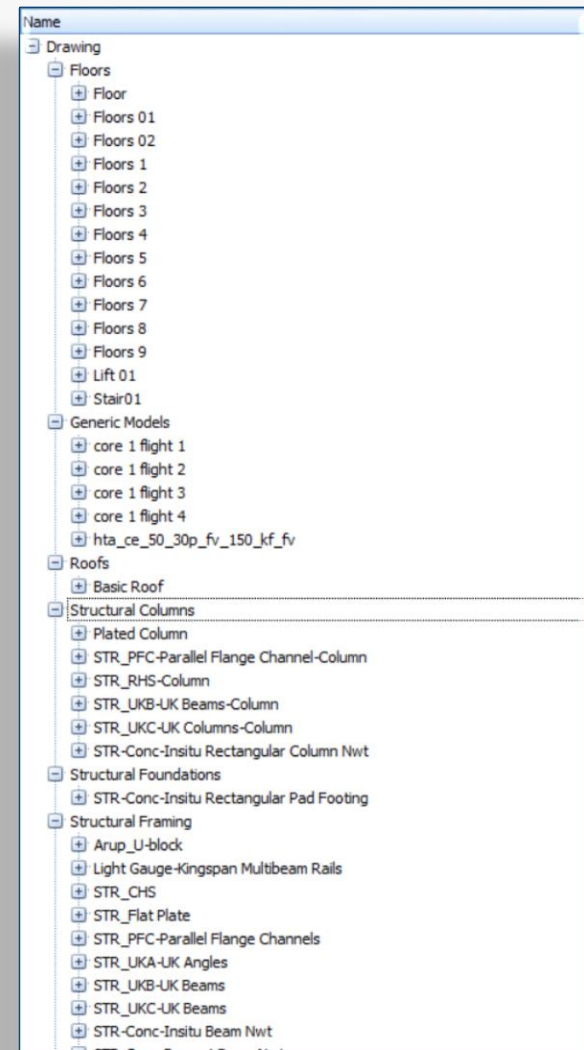
PERSONAL

- Project Ownership (reduced assistance)
- Change in Career Path
- Career Progression
- Increasing interest in BIM



Before:

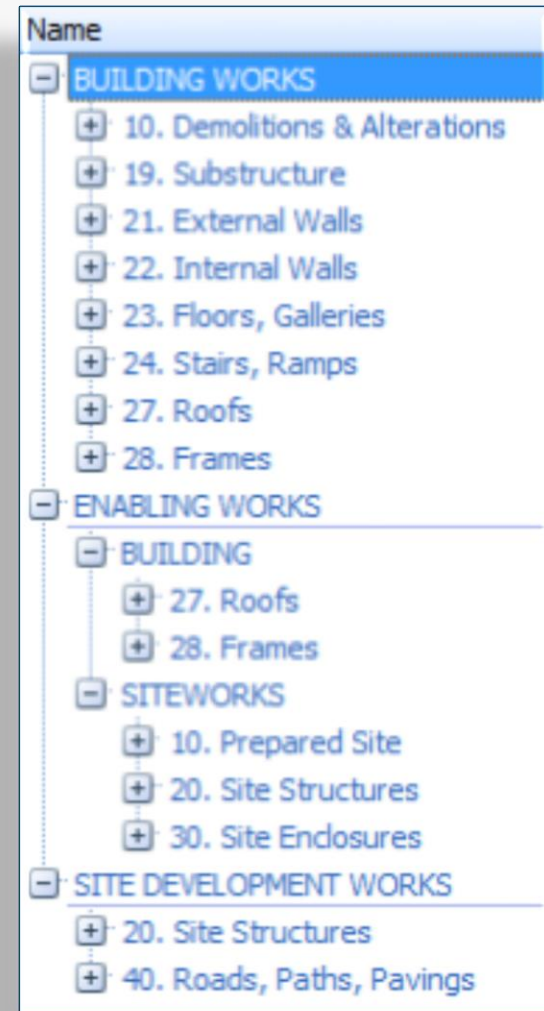
- Designers Model Tree
- Floors incl. Foundations, Beds, Slabs, Roof, etc.





After (i):

- QS Manipulated Model Tree
- Level 1: Coded to NSBE Elements





After (ii):

- QS Manipulated Model Tree
- Level 1: Coded to NSBE Elements
- Level 2: Coded to ARM Categories



Cita
BIM GATHERING



Cian Clancy (KSN Construction Consultants)

THANK YOU

